

PHOTO NO. 1

WASHINGTON
BRIDGE
NO. 200

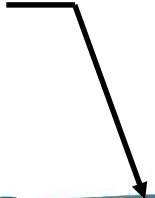
BRIDGE NAME PLATE

BRIDGE NO. 020001

07/19/2017

PHOTO NO. 2

**BRIDGE 020001 IS
HIDDEN BY
BRIDGE 070001
IN FOREGROUND**



SPAN #10

SPAN #7

SPAN #6

SPAN #4

**NORTH ELEVATION,
LOOKING SOUTHEAST**

BRIDGE NO. 020001

06/08/2017

PHOTO NO. 3

SPAN #5

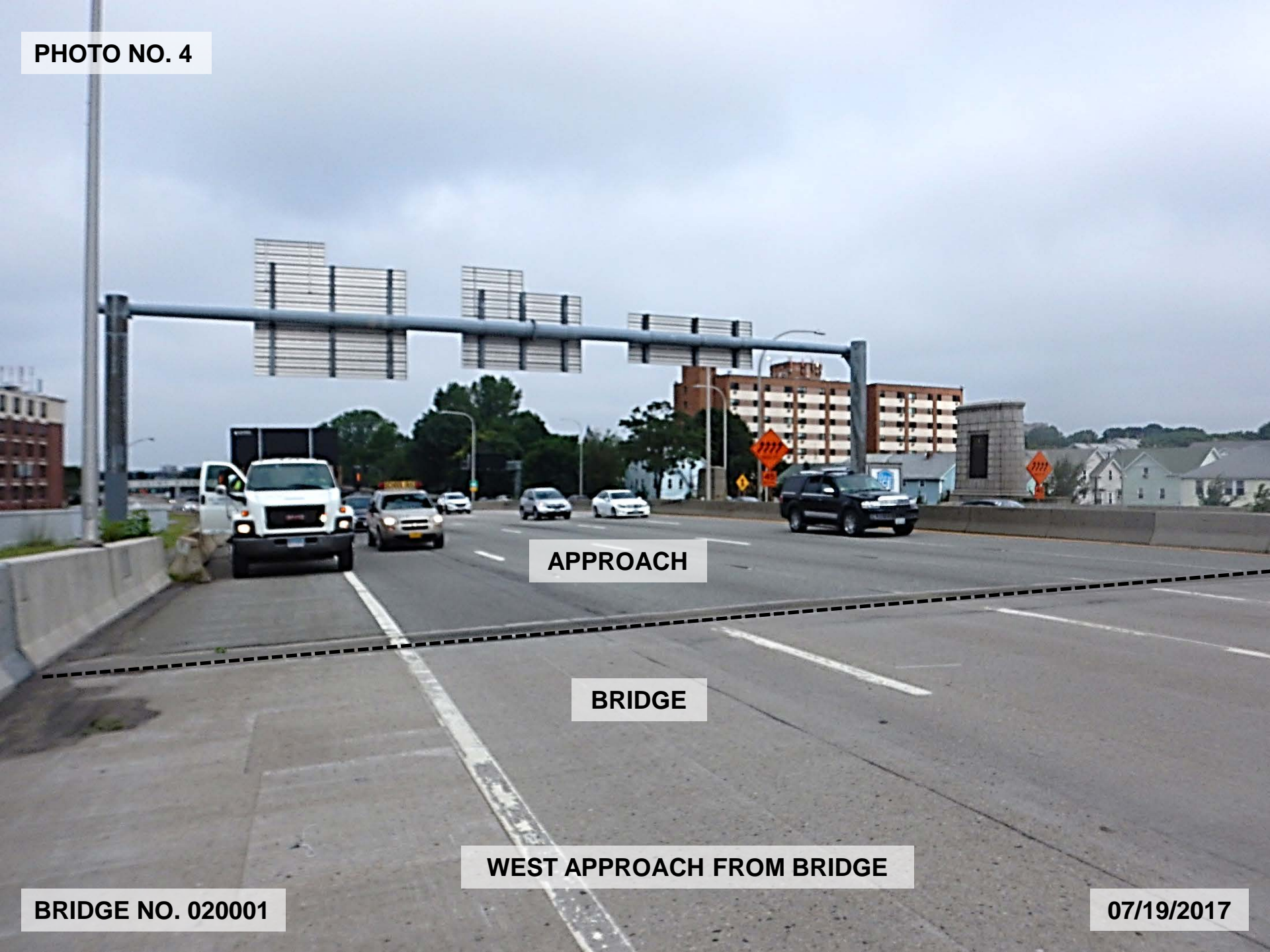
SPAN #6

**SOUTH ELEVATION,
LOOKING NORTHEAST**

BRIDGE NO. 020001

06/19/2017

PHOTO NO. 4



APPROACH

BRIDGE

WEST APPROACH FROM BRIDGE

BRIDGE NO. 020001

07/19/2017

PHOTO NO. 5

EXIT 6 EAST
195 6 EAST

EXIT 5
R.I. 103 EAST
Warren Ave.
1/2 MILE

44
Taunton Ave.
Riverside
EXIT ONLY

BRIDGE

APPROACH

BRIDGE FROM WEST APPROACH

BRIDGE NO. 020001

07/19/2017

PHOTO NO. 6

**HAIRLINE CRACKS, LIGHT WEAR,
AND ISOLATED SCRAPES**

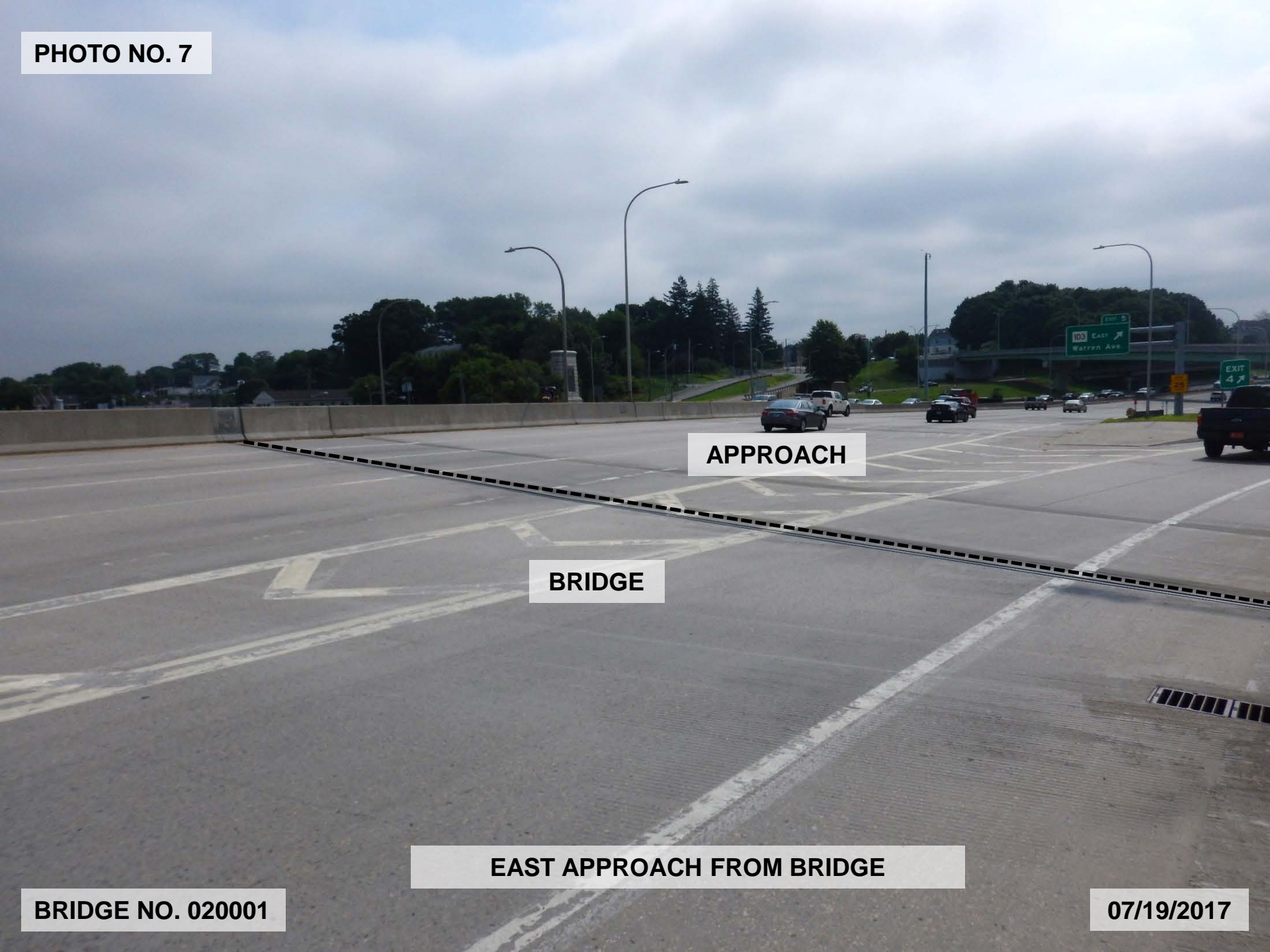


**WEARING SURFACE FROM ABUTMENT #1
JOINT, LOOKING NORTHEAST**

BRIDGE NO. 020001

07/19/2017

PHOTO NO. 7



APPROACH

BRIDGE

EAST APPROACH FROM BRIDGE

BRIDGE NO. 020001

07/19/2017

PHOTO NO. 8

BRIDGE

APPROACH

BRIDGE FROM EAST APPROACH

BRIDGE NO. 020001

07/19/2017

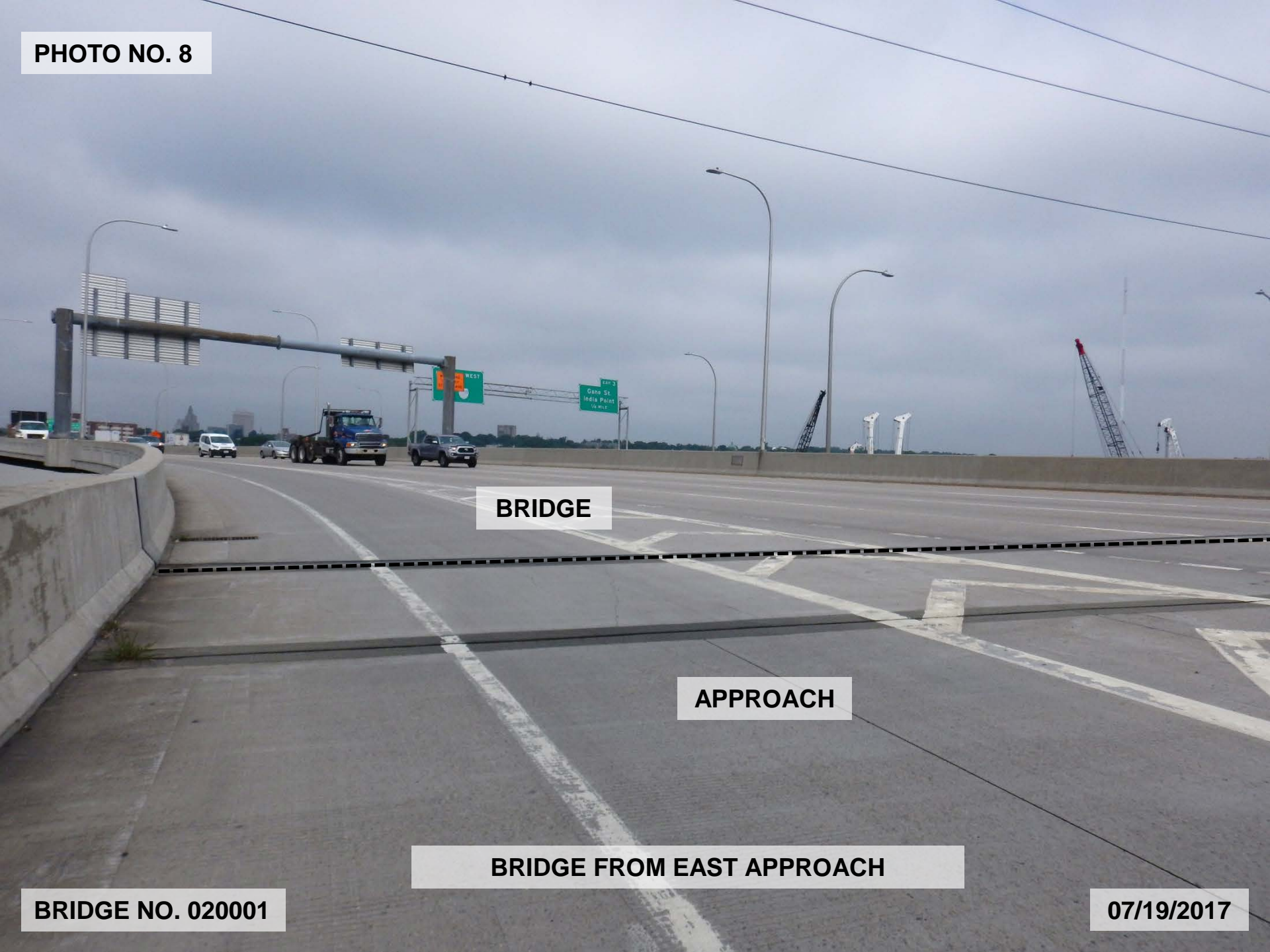


PHOTO NO. 9

GIRDER "A"

GIRDER "C"

GIRDER "E"

GIRDER "G"

GIRDER "J"

SPAN #12 UNDERSIDE OF DECK AND
FRAMING, LOOKING EAST

BRIDGE NO. 020001

07/17/2017

PHOTO NO. 10

GIRDER "A"

GIRDER "C"

GIRDER "E"

GIRDER "G"

GIRDER "J"

**SPAN #14 UNDERSIDE OF DECK AND
FRAMING, LOOKING SOUTHEAST**

BRIDGE NO. 020001

07/14/2017

PHOTO NO. 11

IMPACT DAMAGE, SCRAPES,
AND APPROXIMATELY 15'
LONG x 3' HIGH

NORTHWEST RAIL, LOOKING NORTH

BRIDGE NO. 020001

07/19/2017

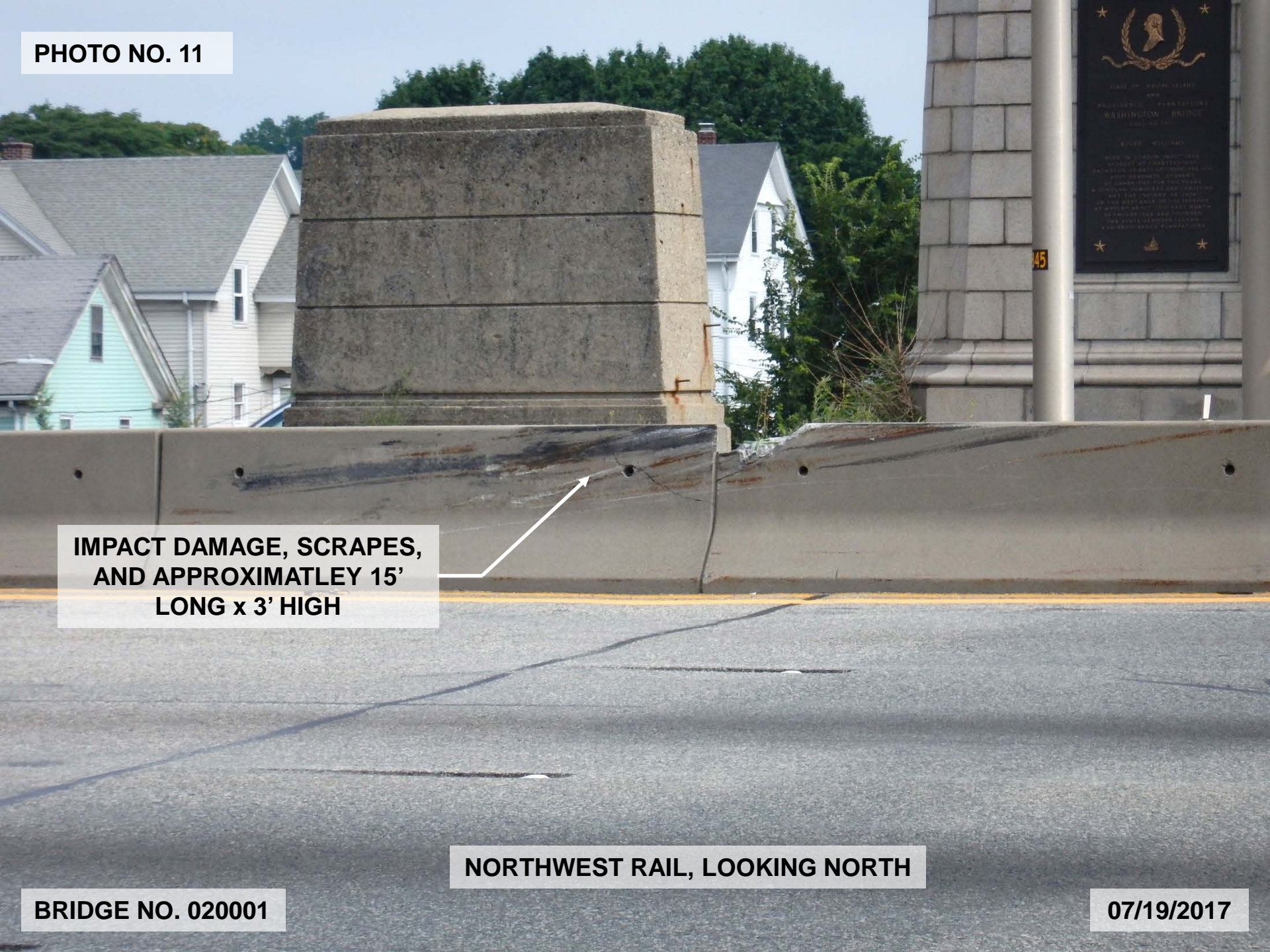


PHOTO NO. 12

**WHEEL PATH
RUTTING 1/2"
DEEP**

**HAIRLINE CRACKS FULL HEIGHT
SPACED 2' TO 3' APART ALONG
APPROACH AND BRIDGE RAILING**

**CRACK 45' LONG x UP
TO 1" WIDE**

**PARTIALLY SEALED
LONGITUDINAL
CRACK FULL LENGTH
x 1/2" WIDE**

**NEOPRENE SEAL IS
DEPRESSED UP TO 3'
LONG**

DEBRIS IN SEAL

**ABUTMENT #1 DECK JOINT,
LOOKING NORTH**

BRIDGE NO. 020001

07/19/2017

PHOTO NO. 13



LIGHT WEAR



**TRANSVERSE HAIRLINE
CRACKS UP TO FULL
LENGTH SPACED
APPROXIMATELY 2' TO 3'
APART**



**SPAN #1 WEARING
SURFACE, LOOKING NORTH**

BRIDGE NO. 020001

07/19/2017

PHOTO NO. 14

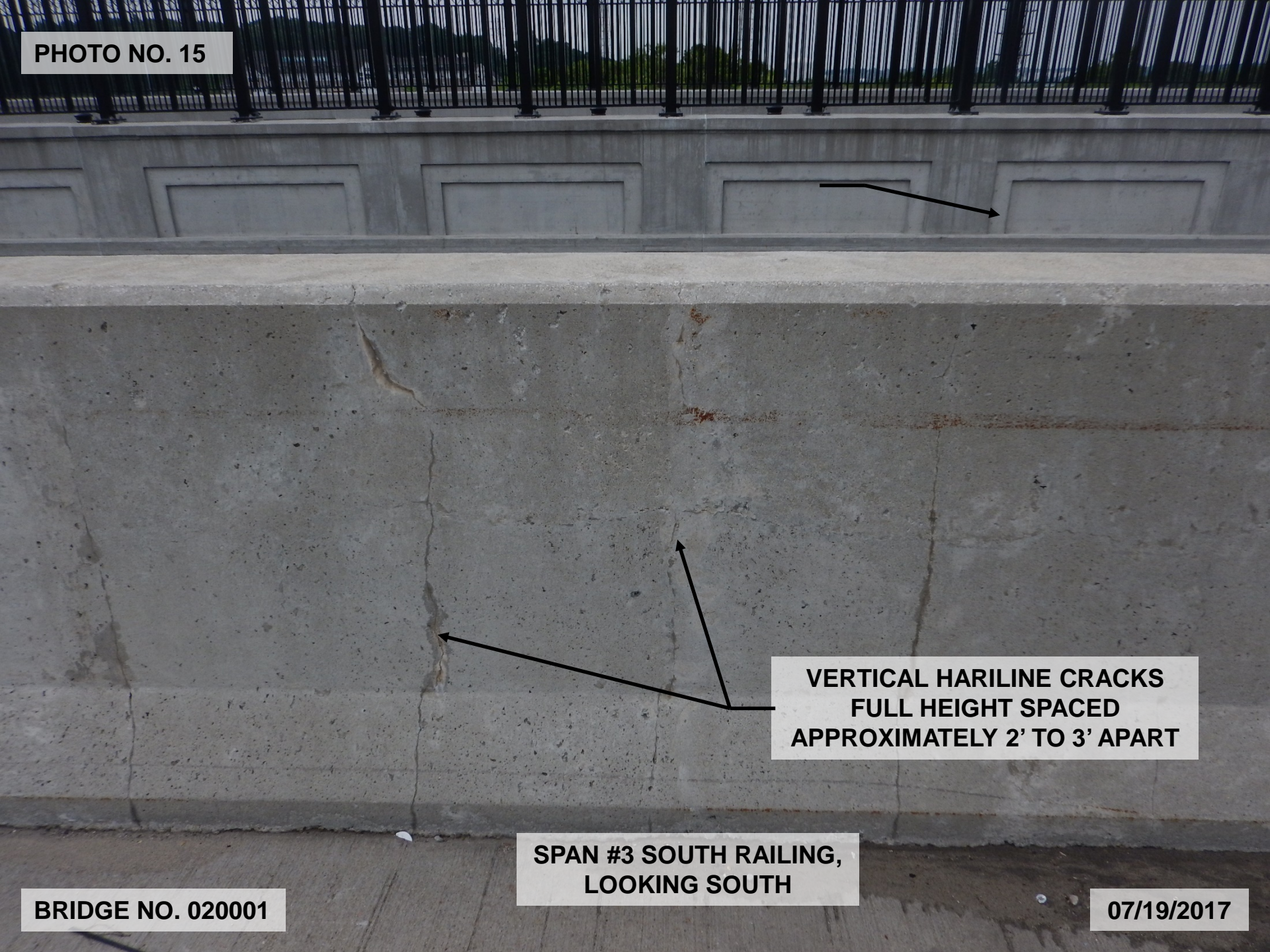
**100% CLOGGED WITH
DEBRIS**

**PIER #2, SOUTH SCUPPER,
LOOKING EAST**

BRIDGE NO. 020001

07/19/2017

PHOTO NO. 15



VERTICAL HAIRLINE CRACKS
FULL HEIGHT SPACED
APPROXIMATELY 2' TO 3' APART

SPAN #3 SOUTH RAILING,
LOOKING SOUTH

BRIDGE NO. 020001

07/19/2017

PHOTO NO. 16

**MODERATE TO HEAVY DEBRIS
IN JOINT AT ROADWAY
SHOULDER**

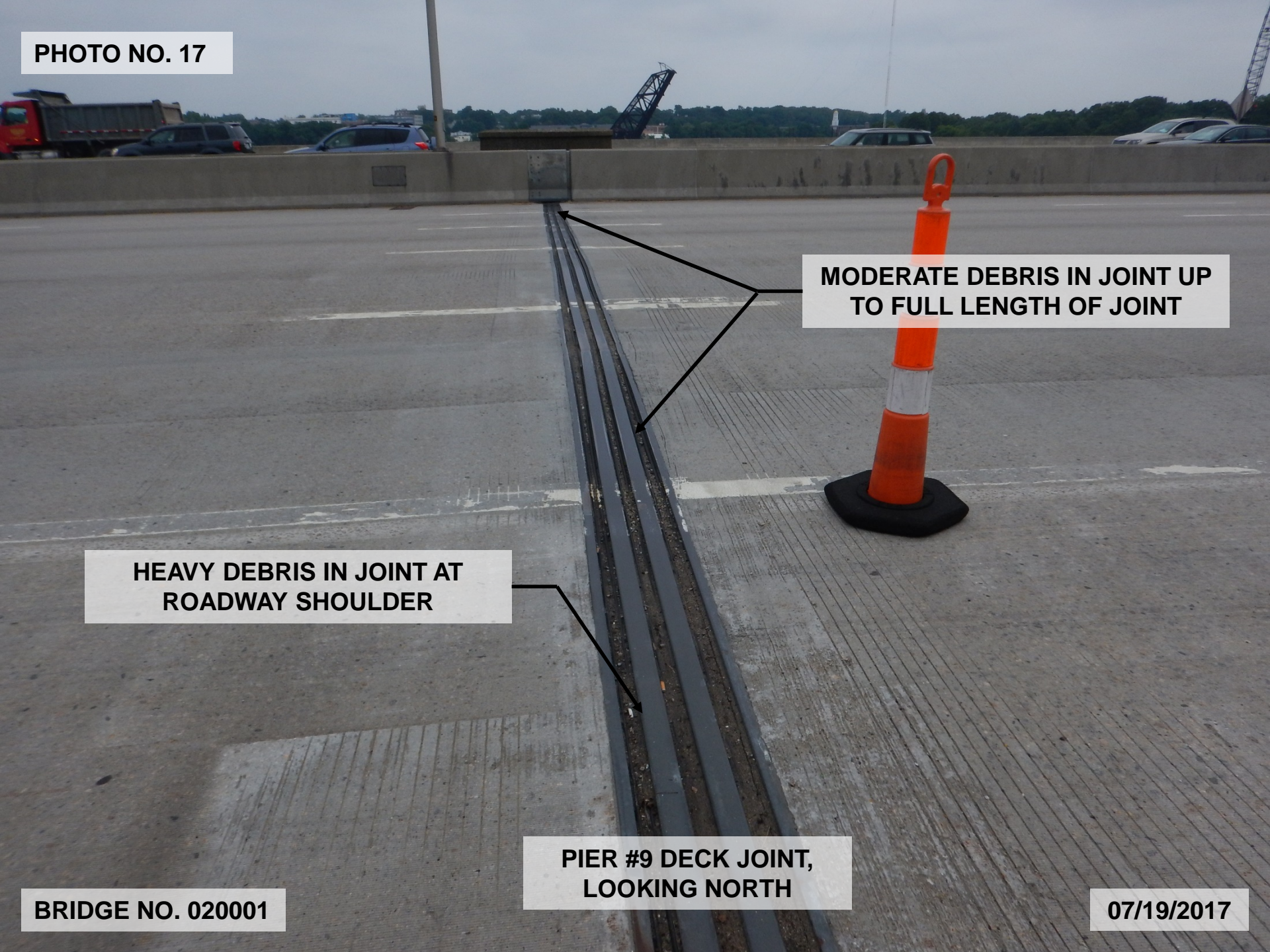
**RIPPED AND TORN NEOPRENE
SEAL ALONG APPROXIMATELY
HALF LENGTH OF JOINT WITH
LIGHT TO MODERATE DEBRIS**

**PIER #4 DECK JOINT,
LOOKING NORTH**

BRIDGE NO. 020001

07/19/2017

PHOTO NO. 17



**MODERATE DEBRIS IN JOINT UP
TO FULL LENGTH OF JOINT**

**HEAVY DEBRIS IN JOINT AT
ROADWAY SHOULDER**

**PIER #9 DECK JOINT,
LOOKING NORTH**

BRIDGE NO. 020001

07/19/2017

PHOTO NO. 18

**PARTIALLY CLOGGED WITH
DIRT AND VEGETATION**



**PIER #11 SCUPPER AT SOUTH
RAILING, LOOKING EAST**

BRIDGE NO. 020001

07/19/2017

PHOTO NO. 19

**TOP OF APPROACH
SLAB HAS MINOR TO
MODERATE WEAR WITH
ISOLATED SCRAPES
AND GOUGES**

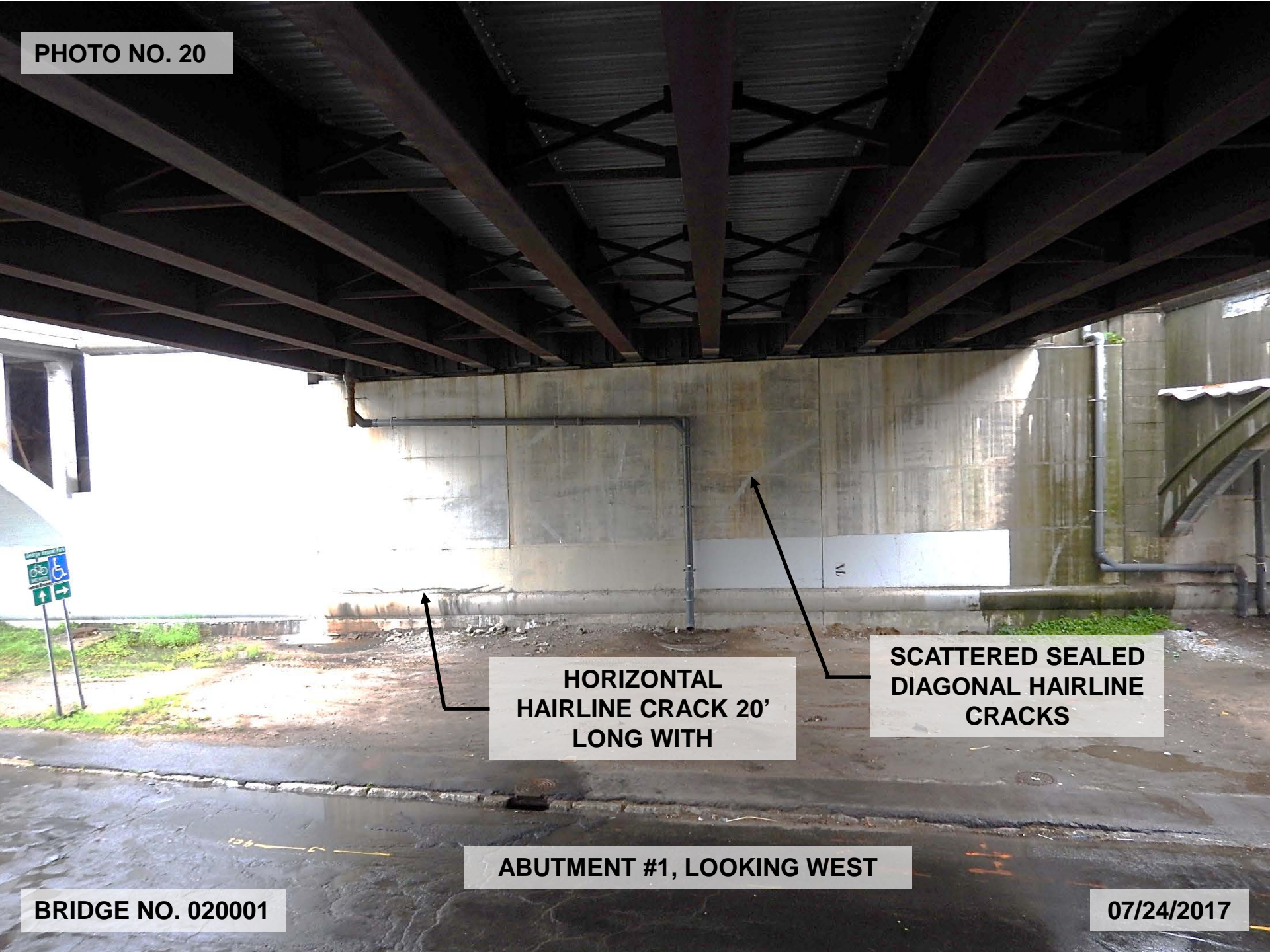
**TEAR IN NEOPRENE
SEAL 5' LONG**

**ABUTMENT #2 DECK JOINT,
LOOKING NORTH**

BRIDGE NO. 020001

07/19/2017

PHOTO NO. 20



HORIZONTAL
HAIRLINE CRACK 20'
LONG WITH

SCATTERED SEALED
DIAGONAL HAIRLINE
CRACKS

ABUTMENT #1, LOOKING WEST

BRIDGE NO. 020001

07/24/2017

PHOTO NO. 21

GIRDER "I"

GIRDER "J"

DAMAGE TO THE
BOTTOM FLANGE
BENT UPWARD
APPROXIMATELY 2'
LONG x 3/4" HIGH

DAMAGE TO THE
BOTTOM FLANGE
BENT UPWARD
SLIGHTLY

SPAN #2 GIRDERS "I" AND "J" AT SECOND CROSS
FRAME FROM PIER #2, LOOKING SOUTHEAST

BRIDGE NO. 020001

07/17/2017

PHOTO NO. 22

**DRAIN OUTFALL HAS
DEBRIS BUILD-UP
RESULTING IN STORMWATER
DIVERSION FROM CATCH
BASIN AND EROSION**

EROSION

**SPAN #2, PIER #1 SOUTH CATCH BASIN,
LOOKING EAST**

BRIDGE NO. 020001

07/17/2017



PHOTO NO. 23

SIGNS OF LEAKAGE
FROM ANCHOR BOLT
HOLE IN DECK
UNDERSIDE

LAMINAR RUST 14' LONG
AT TOP FACE OF BOTTOM
FLANGE CONTINUES TO
SECOND CROSS FRAME
FROM PIER #3

LAMINAR RUST 14' LONG
x 3" HIGH ON BOTTOM OF
NORTH WEB

LAMINAR RUST 4'
LONG UNDERSIDE OF
BOTTOM FLANGE

GIRDER "H"

GIRDER "G"

SPAN #3, BAY "G" NEAR SECOND CROSS
FRAME FROM PIER #3, LOOKING SOUTHWEST

BRIDGE NO. 020001

07/17/2017

PHOTO NO. 24

SCATTERED AREAS
OF RUST ON STAY-IN-
PLACE

GIRDER "I"

GIRDER "J"

SPAN #3 BAY "I" BETWEEN SECOND AND THIRD
CROSS FRAME FROM PIER #4, LOOKING EAST

BRIDGE NO. 020001

07/17/2017

PHOTO NO. 25

GAP BETWEEN
MASONRY PLATE AND
PEDESTAL AT NORTH
AND SOUTH ENDS UP
TO 1/4"

SCATTERED AREAS OF
LIGHT TO MODERATE RUST
ON BEARING PLATES

GIRDER "E" BEARING AT PIER #3,
LOOKING SOUTHEAST

BRIDGE NO. 020001

07/17/2017

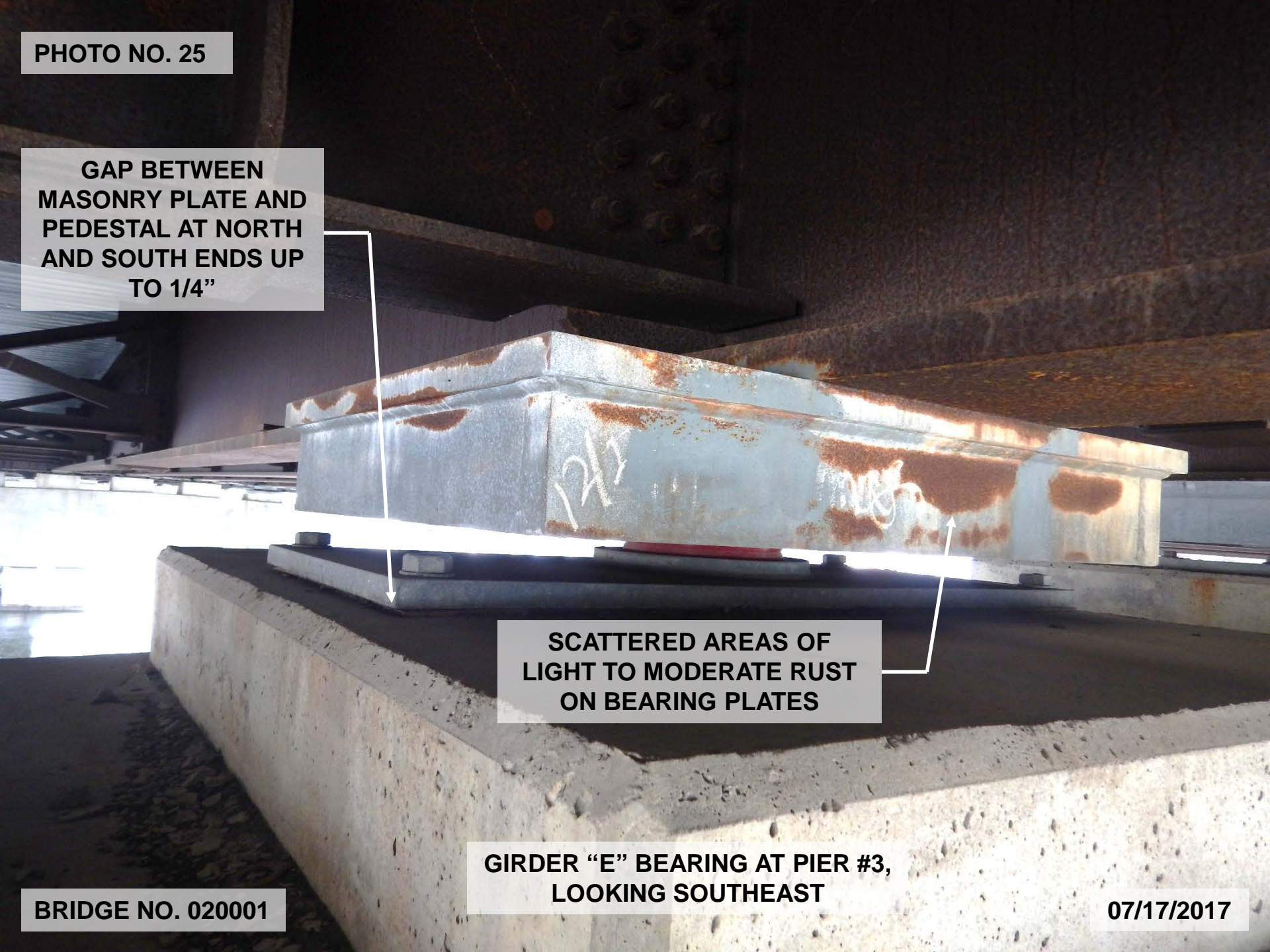


PHOTO NO. 26

GIRDER
"E"

GIRDER
"F"

GIRDER
"G"

VERTICAL CRACK 6'
HIGH X 0.010" WIDE
BELOW GIRDER "E"
CONTINUING ACROSS
FULL WIDTH OF CAP
UNDERSIDE

VERTICAL
CRACK 6' HIGH
X 0.005" WIDE
BELOW GIRDER
"F"
CONTINUING
12" ONTO CAP
UNDERSIDE

SPAN #3 WEST FACE OF PIER #3
CAP, LOOKING SOUTHEAST

BRIDGE NO. 020001

07/17/2017

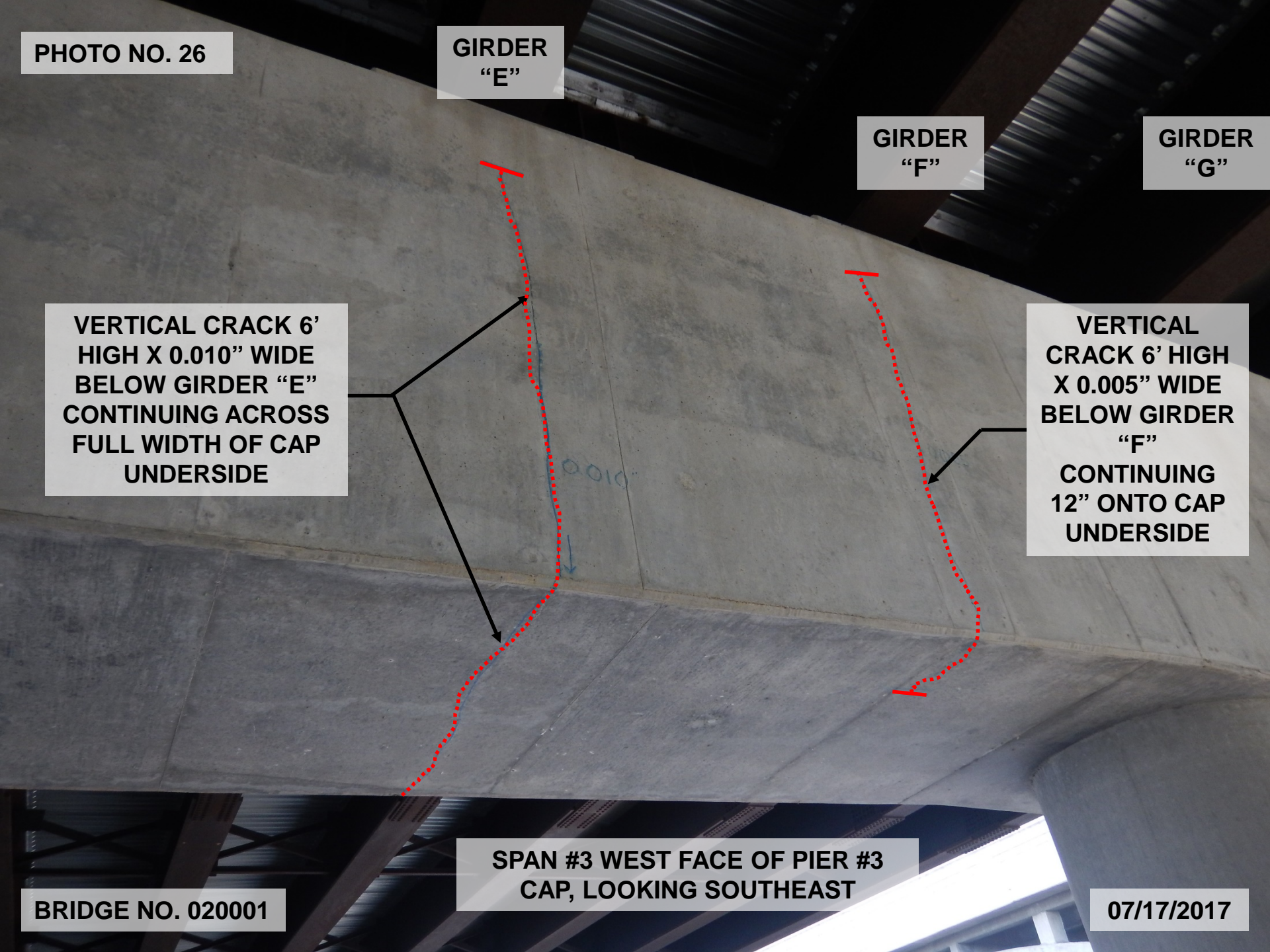


PHOTO NO. 27

SCATTERED AREAS OF
ORANGE TO YELLOW
RUST

BOTTOM FLANGE
BOLT HEAD IS NOT
FLUSH WITH SPLICE
PLATE

SPAN #4, GIRDER "F" SPLICE NEAR
PIER #3, LOOKING NORTH

BRIDGE NO. 020001

06/23/2017

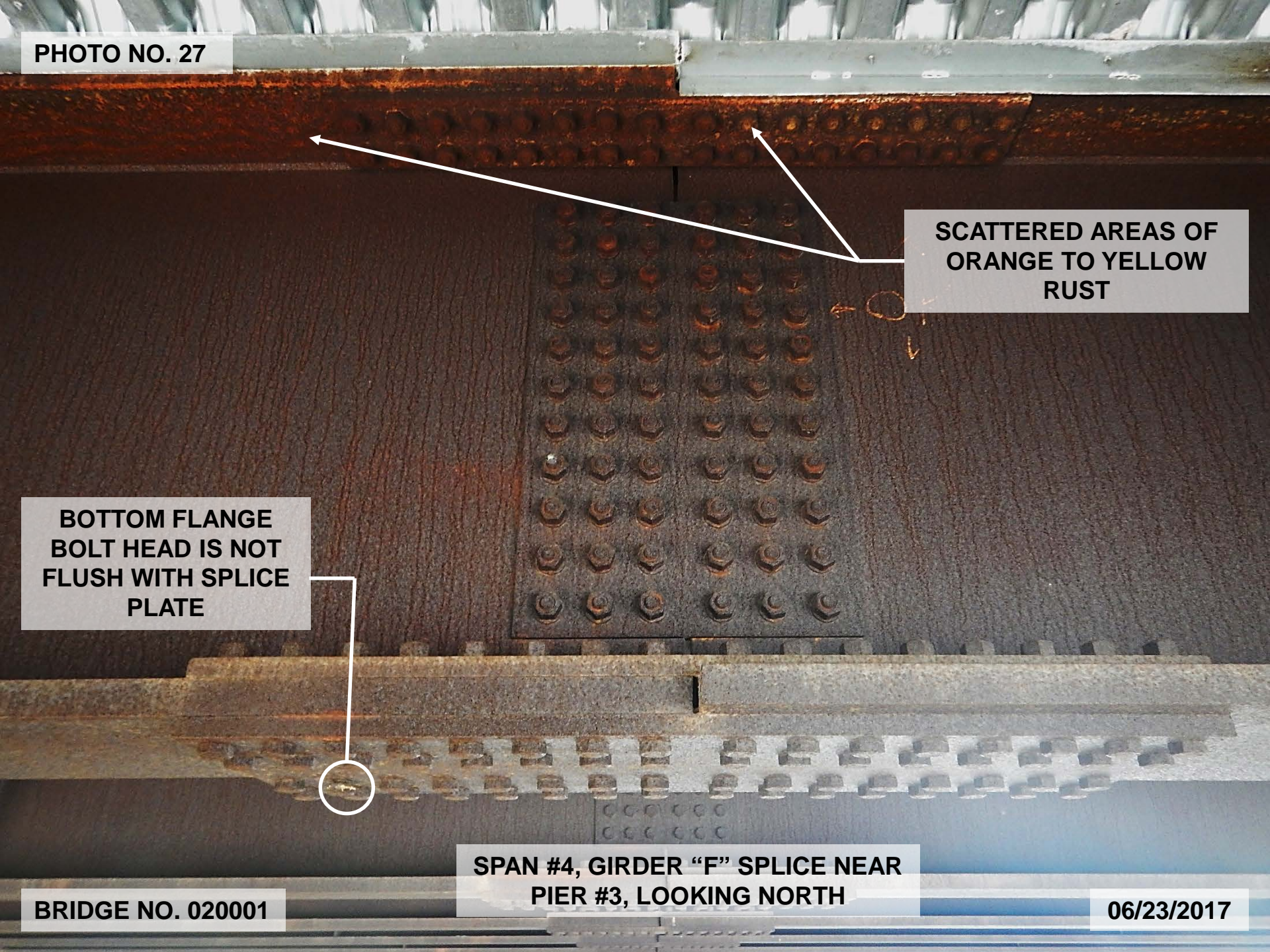


PHOTO NO. 28

COMPRESSED BEARING
BULGING 1/4" AT SOUTH
SIDE

BRIDGE NO. 020001

SPAN #4, PIER #4, GIRDER "E" BEARING,
LOOKING EAST

06/19/2017

PHOTO NO. 29

**NORTHWEST ANCHOR
BOLT THREADS NOT
ENGAGED WITH
THREADED INSERT**

**GIRDER "G" BEARING AT PIER #3,
LOOKING WEST**

BRIDGE NO. 020001

07/17/2017

PHOTO NO. 30

PATCHED ANCHOR
BOLT HOLES

CONSTRUCTION
JOINT

TRANSVERSE
HAIRLINE CRACKS
SPACED 3' to 6' APART

GIRDER "G"

GIRDER "H"

BRIDGE NO. 020001

SPAN #5, BAY "G" UNDERSIDE OF
DECK, LOOKING EAST

06/19/2017

PHOTO NO. 31

SPAN #4

SPAN #5

**PAINTED GIRDER
ENDS EXHIBIT
ISOLATED LOCATIONS
OF CHIPPED PAINT**

**MASONRY PLATE
EXHIBITS MODERATE
RUST**

**SOUTH SIDE OF GIRDER "J" AT PIER #4,
LOOKING NORTH**

BRIDGE NO. 020001

06/19/2017

PHOTO NO. 32

GIRDER "A"

BOTTOM FLANGE
EXHIBITS FULL LENGTH x
UP TO FULL WIDTH
AREAS OF MINOR
FLAKING RUST

SPAN #5, GIRDER "A" NEAR PIER #4,
LOOKING NORTHEAST

BRIDGE NO. 020001

06/19/2017

PHOTO NO. 33



ORANGE TO YELLOW
RUST AT THE END
DIAPHRAGM

BAY "D" END DIAPHRAGM OVER PIER #5,
LOOKING EAST

BRIDGE NO. 020001

06/19/2017

PHOTO NO. 34

GIRDER MISALIGNED
1" TO THE SOUTH
OVER BEARING

GIRDER
CENTERLINE

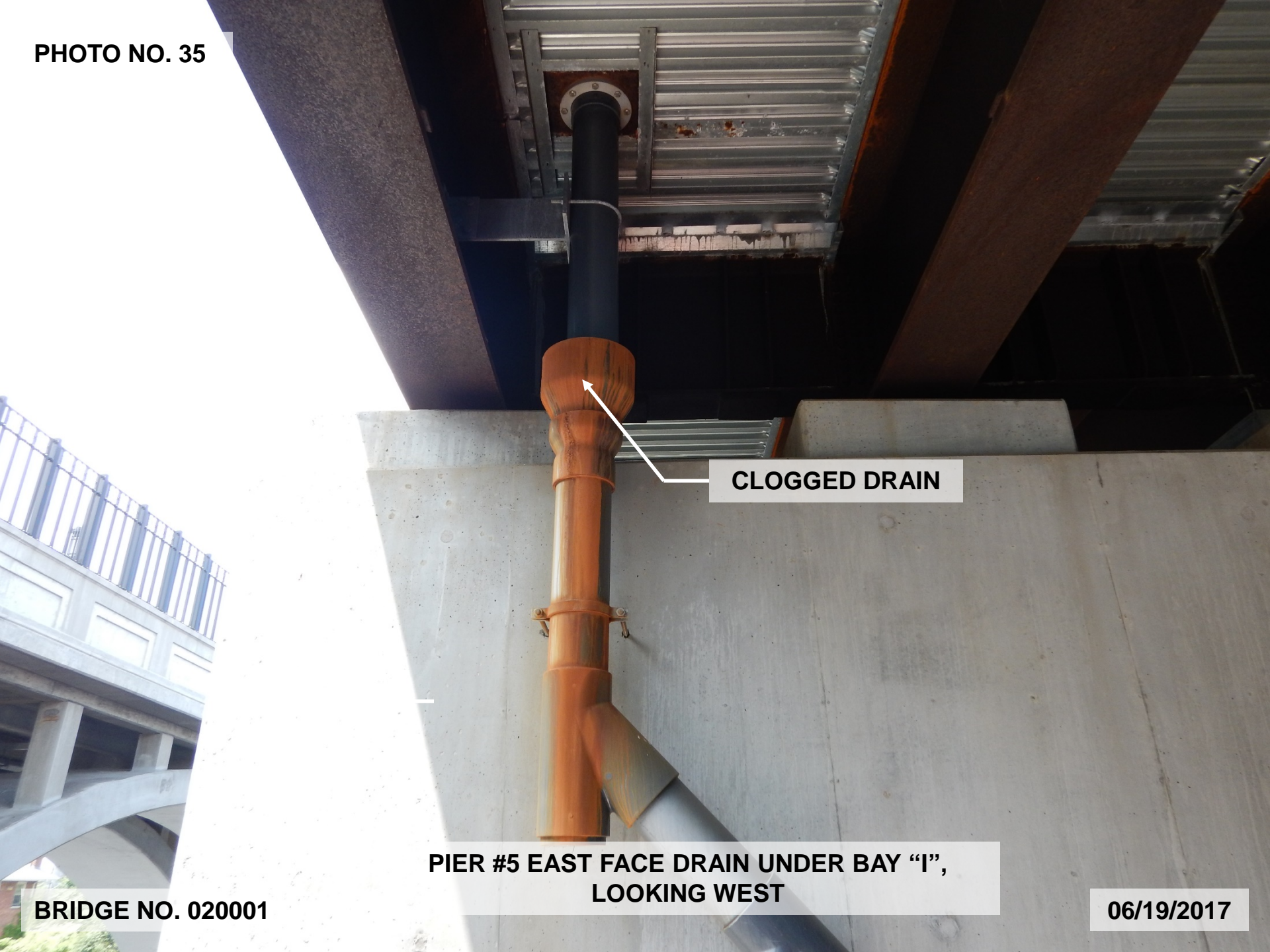
BEARING
CENTERLINE

SPAN #5, GIRDER "E" BEARING AT
PIER #4, LOOKING WEST

BRIDGE NO. 020001

06/19/2017

PHOTO NO. 35



CLOGGED DRAIN

**PIER #5 EAST FACE DRAIN UNDER BAY "I",
LOOKING WEST**

BRIDGE NO. 020001

06/19/2017

PHOTO NO. 36

COLUMN "C"

COLUMN "A"

PIER WALLS EXHIBIT
A FEW VERTICAL
HAIRLINE CRACKS

SCATTERED AREAS
OF MISSING MORTAR

PIER #5 EAST ELEVATION, LOOKING
WEST

BRIDGE NO. 020001

06/20/2017



PHOTO NO. 37

D9

SCATTERED AREAS OF
ORANGE TO YELLOW RUST

SCATTERED AREAS OF
CONCRETE DEBRIS OVER
BEARINGS AND GIRDERS

BAY "A" AT PIER #6, LOOKING EAST

BRIDGE NO. 020001

06/20/2017

PHOTO NO. 38

TAPERED GAP 0'-1/16"
HIGH BETWEEN
BOTTOM FLANGE AND
SOLE PLATE

LIGHT RUST

GIRDER "H" BEARING AT PIER #5,
LOOKING SOUTHWEST

BRIDGE NO. 020001

06/20/2017

PHOTO NO. 39

GAP BETWEEN MASONRY
PLATE AND CONCRETE
PEDESTAL UP TO 1/2" HIGH
AT SOUTHWEST CORNER

GIRDER "E" BEARING AT PIER #6,
LOOKING SOUTHEAST

BRIDGE NO. 020001

06/20/2017

PHOTO NO. 40

THREE (3) MISSING
BOLTS

SPAN #7, GIRDER "G" BOTTOM FLANGE
SPLICE (WEST SPLICE), LOOKING NORTHEAST

BRIDGE NO. 020001

06/20/2017

PHOTO NO. 41

**NORTHWEST ANCHOR
BOLT IS BACKED OFF 1-
1/8" AND IS IN CONTACT
WITH SOLE PLATE**

**PIER #7, GIRDER "D" BEARING,
LOOKING EAST**

BRIDGE NO. 020001

06/21/2017

PHOTO NO. 42

COLUMN "A"

SCATTERED
AREAS OF MINOR
GRAFFITI ON
COLUMNS "B" AND
"C"

FENDER SYSTEM

PIER #7 WEST ELEVATION,
LOOKING EAST

BRIDGE NO. 020001

06/20/2017

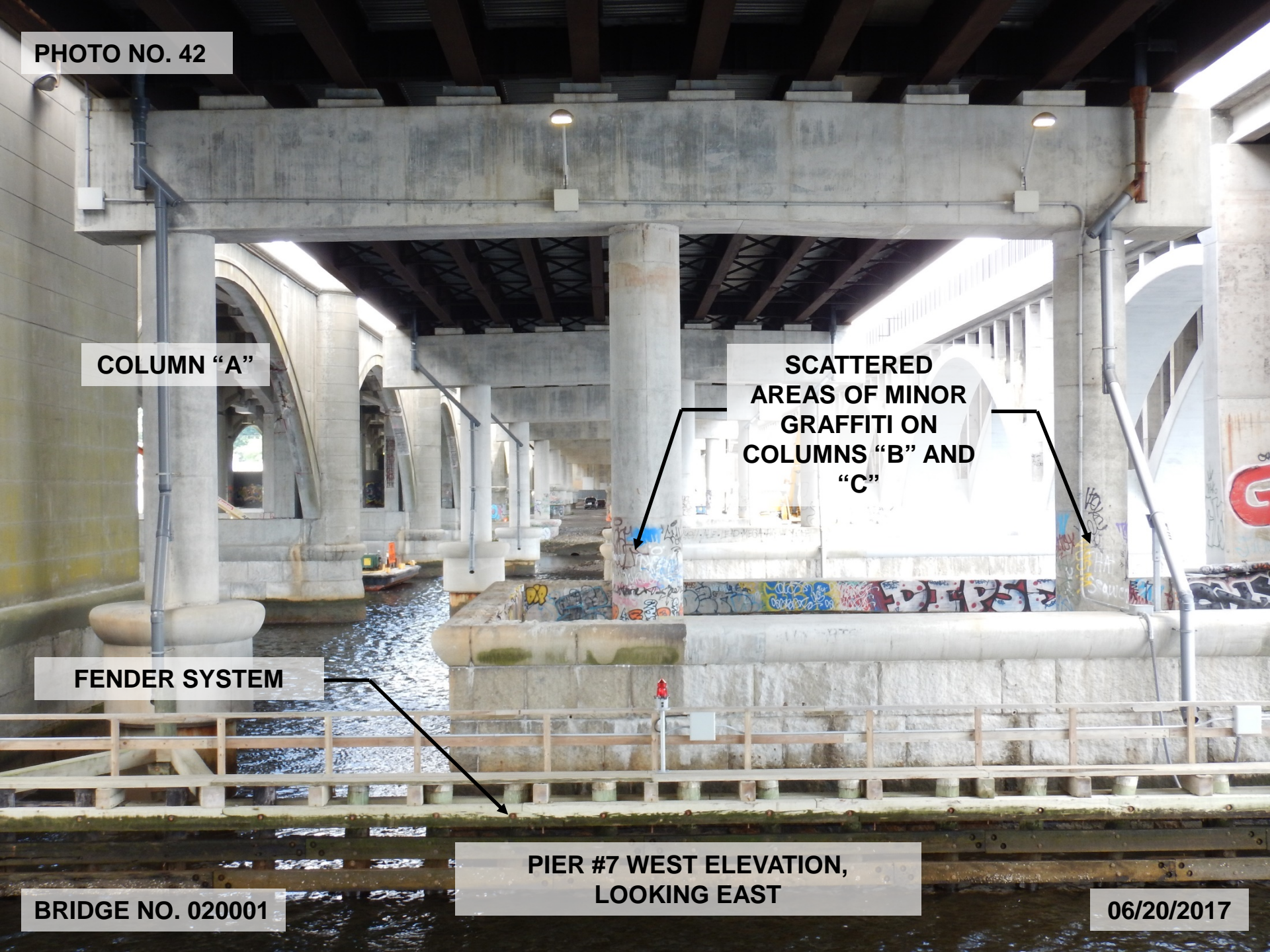
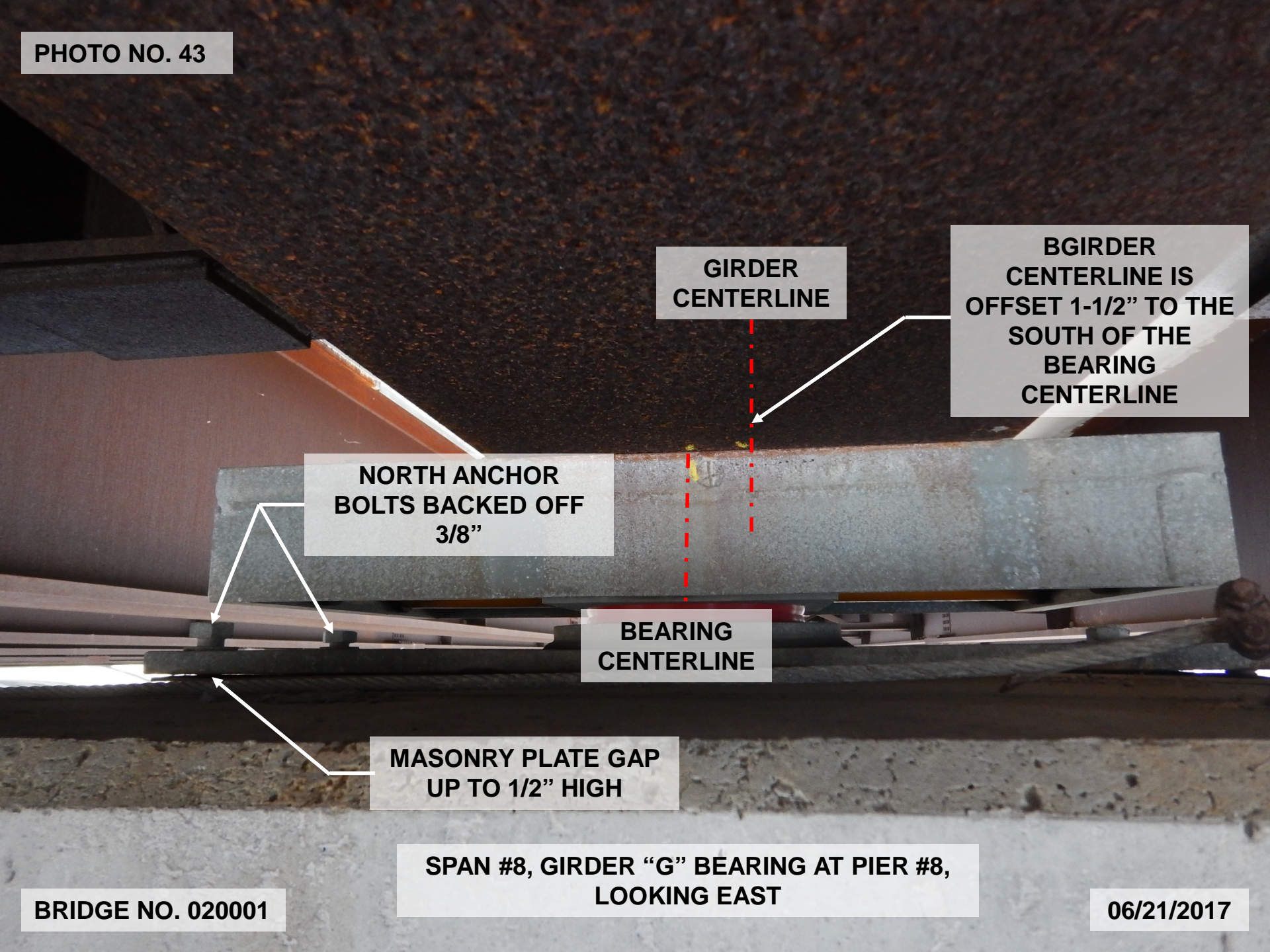


PHOTO NO. 43



GIRDER
CENTERLINE

BGIRDER
CENTERLINE IS
OFFSET 1-1/2" TO THE
SOUTH OF THE
BEARING
CENTERLINE

NORTH ANCHOR
BOLTS BACKED OFF
3/8"

BEARING
CENTERLINE

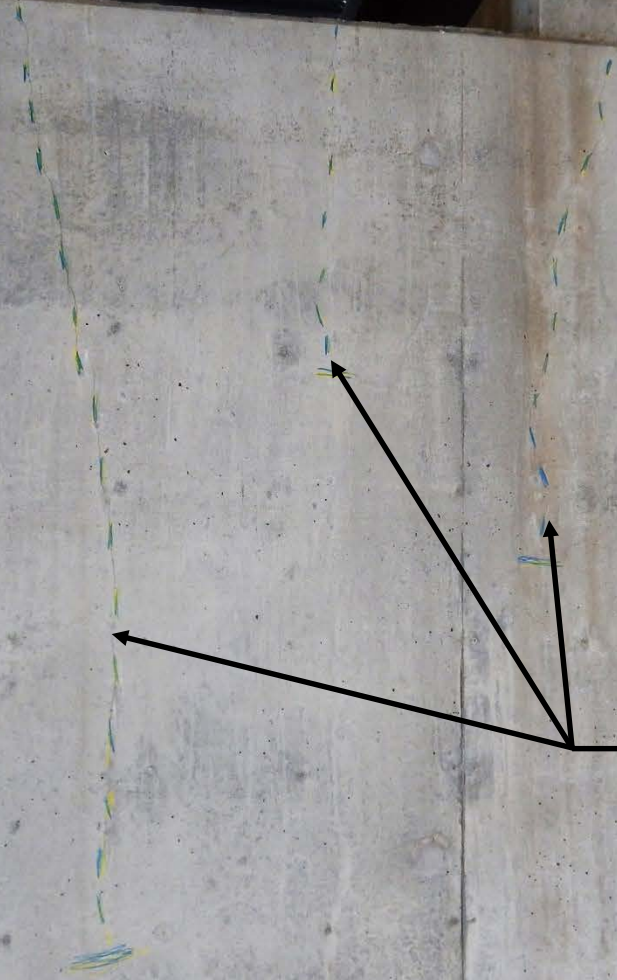
MASONRY PLATE GAP
UP TO 1/2" HIGH

SPAN #8, GIRDER "G" BEARING AT PIER #8,
LOOKING EAST

BRIDGE NO. 020001

06/21/2017

PHOTO NO. 44



3 VERTICAL/DIAGONAL
HAIRLINE CRACKS
EXTENDING FROM TOP
OF CAP

PIER #8, EAST FACE OF PIER CAP BELOW
GIRDERS "B" AND "C", LOOKING WEST

BRIDGE NO. 020001

06/20/2017

PHOTO NO. 45

**BOLT IS UNDERSIZED
AND LOOSE**

**SPAN #9, GIRDER "A" BOLTED SPLICE,
LOOKING SOUTHEAST**

BRIDGE NO. 020001

06/21/2017

PHOTO NO. 46

**WASHER PLATE AT
TOP CROSS MEMBER
IS BEARING ON
ADJACENT WASHER
AND IS SLIGHTLY
BENT**

GIRDER "H"

**SPAN #9, BAY "G" – FIRST INTERIOR CROSS
FRAME FROM PIER #9, LOOKING EAST**

BRIDGE NO. 020001

06/21/2017

PHOTO NO. 47

SPAN #9

SPAN #10

**ELECTRICAL CONDUIT
FLEXIBLE COUPLING AT JOINT
IS TORN AND DETACHED**

**SPAN #9 AND #10, EXTERIOR FACE OF SOUTH
RAILING AT PIER #9, LOOKING NORTH**

BRIDGE NO. 020001

06/21/2017

PHOTO NO. 48

NARROW GAP BETWEEN
DIAPHRAGM AND
BEARING STIFFENER

CONNECTION
BOLTS ARE NOT
FULLY ENGAGED

BACKSIDE OF
BEARING STIFFENER
NOT PAINTED

SPAN #10, GIRDER "H" AT PIER #9,
LOOKING SOUTHEAST

BRIDGE NO. 020001

07/05/2017

PHOTO NO. 49

NORTH AND SOUTH
BOLTS BACKED OFF
UP TO 1/8"

MASONRY PLATE GAP
UP TO 5/8" HIGH

SPAN #10, GIRDER "H" BEARING AT PIER #10,
LOOKING SOUTHEAST

BRIDGE NO. 020001

07/05/2017

PHOTO NO. 50

EXPOSED FOOTING
22' LONG x 42" HIGH

PIER #10 WEST ELEVATION,
LOOKING EAST

BRIDGE NO. 020001

07/05/2017



PHOTO NO. 51

AREAS OF GRAFFITI

CONCRETE PIER WALLS
EXHIBIT FEW RANDOM
HAIRLINE CRACKS

PIER #11 WEST ELEVATION, LOOKING EAST

BRIDGE NO. 020001

07/05/2017

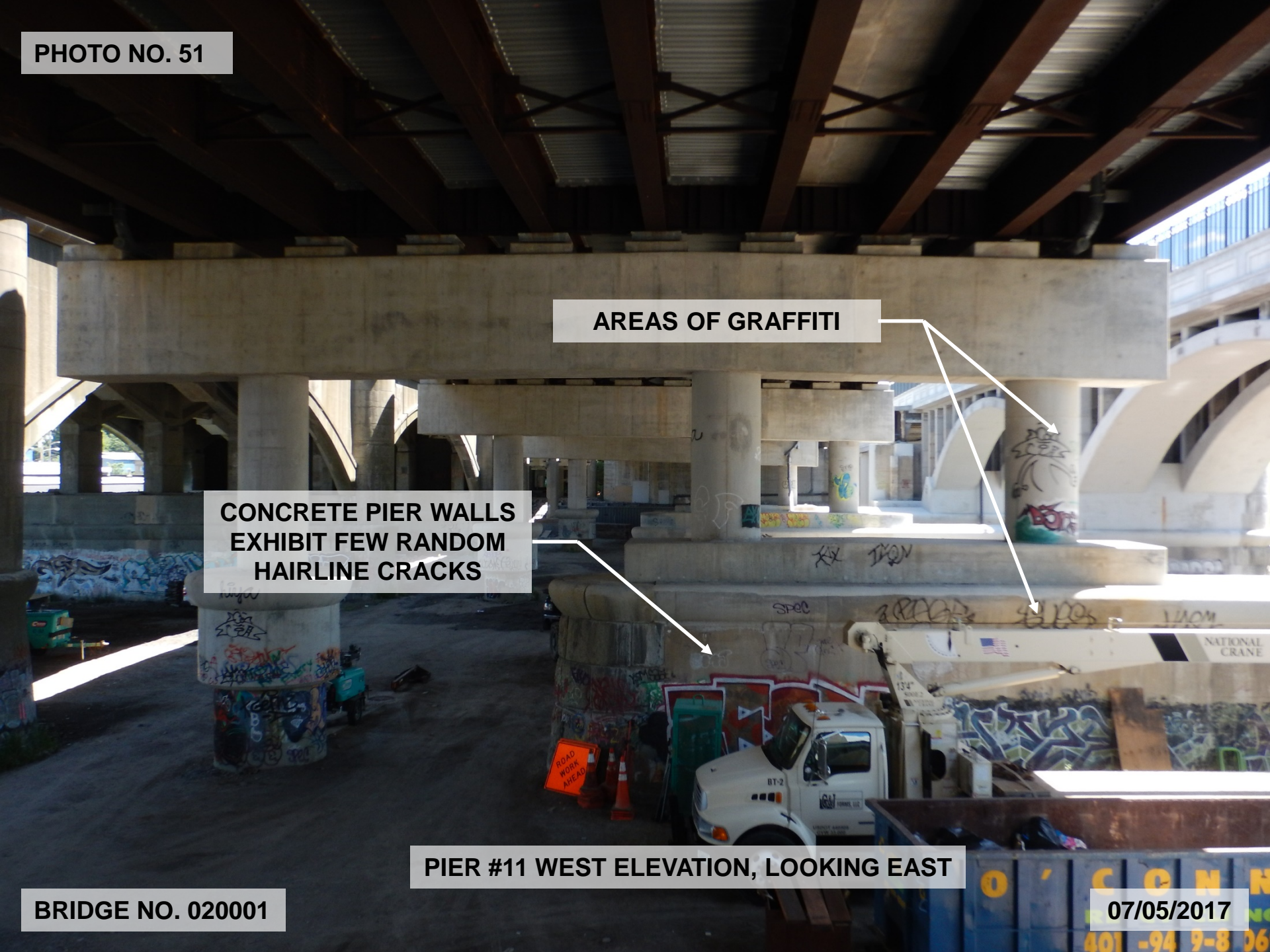


PHOTO NO. 52

**RUST ON STAY-IN-PLACE
FORMS AND ON
ADJACENT TOP FLANGE**

**SPAN #11, GIRDER "A" BETWEEN FIRST AND
SECOND INTERIOR CROSS FRAME FROM PIER #10,
LOOKING SOUTHEAST**

BRIDGE NO. 020001

07/05/2017

PHOTO NO. 53

**ALL FOUR (4)
ANCHOR BOLTS
BACKED OFF UP TO
1/4" HIGH**

**GAP BETWEEN MASONRY
PLATE AND CONCRETE
PEDESTAL UP TO 3/4" HIGH**


**SPAN #12, GIRDER "H" BEARING AT PIER #11,
LOOKING WEST**

BRIDGE NO. 020001

07/06/2017

PHOTO NO. 54

**EVIDENCE OF WATER
SPLASHING ONTO
PIER FACE FROM
DRAIN PIPE**



**SPAN #12, BAY "A" AT PIER #11,
LOOKING NORTH**

BRIDGE NO. 020001

07/06/2017

PHOTO NO. 55

CRACK FULL HEIGHT
x 1/16" WIDE IN THE
PIER WALL

PREVIOUS SPALL HAS BEEN
REPAIRED WITH CONCRETE PATCH

PIER #12 EAST ELEVATION,
LOOKING WEST

BRIDGE NO. 020001

07/05/2017

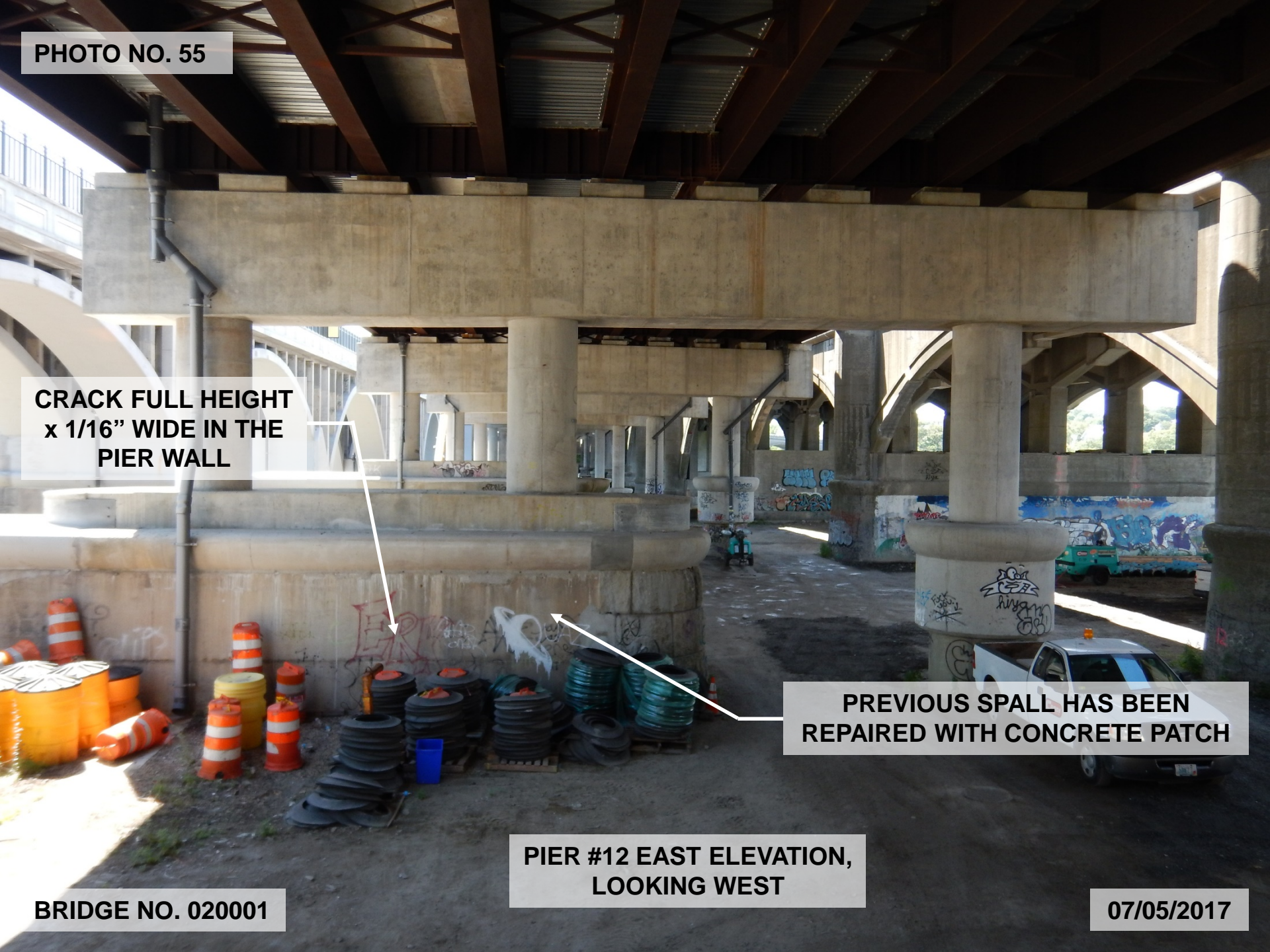


PHOTO NO. 56

TRANSVERSE
HAIRLINE CRACKS
SPACED 2' TO 3' APART

GIRDER "G"

GIRDER "H"

AREA OF SCALING
36" LONG x 20" WIDE
x 1/2" DEEP

ANCHOR BOLT
HOLES ARE NOT
PATCHED

SPAN #13, BAY "G" AT FIRST INTERIOR CROSS
FRAME FROM PIER #12, LOOKING EAST

BRIDGE NO. 020001

07/05/2017

PHOTO NO. 57

ROLLERS ARE OUT OF
ALIGNMENT WITH BEARING



SPAN #13, GIRDER "H" BEARING AT PIER #13,
LOOKING EAST

BRIDGE NO. 020001

07/05/2017

PHOTO NO. 58

SPAN #13

SPAN #14



GAP BETWEEN MASONRY PLATE AND
CONCRETE PEDESTAL UP TO 5/8" HIGH

GIRDER "J" AT PIER #13, LOOKING NORTH

BRIDGE NO. 020001

07/05/2017

PHOTO NO. 59

**SPALL 24" LONG x
7" HIGH x UP TO
12" DEEP**


**CONCRETE
OVER-POUR**

**SPAN #14, GIRDER "A" AT ABUTMENT #2,
LOOKING SOUTHEAST**

BRIDGE NO. 020001

07/13/2017

PHOTO NO. 60



**BOTH NORTHERN
ANCHOR NUTS
BACKED OFF UP TO
1/2" HIGH WITH
MISSING JAM NUTS**

**SPAN #14, GIRDER "I" BEARING AT PIER
#13, LOOKING SOUTHWEST**

BRIDGE NO. 020001

07/05/2017

HOLLOW AREA FULL HEIGHT
x 12" WIDE WITH A SPALL
BELOW THE SEAT 12" WIDE
x 30" HIGH X 6" DEEP


CLOGGED CATCH BASIN

EVIDENCE OF
LEAKING JOINT

RANDOM
HAIRLINE
CRACKS WITH
EFFLORESCENCE

ABUTMENT #2, LOOKING SOUTHEAST

PHOTO NO. 62



**VERTICAL HAIRLINE
CRACKS WITH LIGHT
EFFLORESCENCE**

**ABUTMENT #2 BACKWALL AT BAY "F",
LOOKING EAST**

BRIDGE NO. 020001

07/13/2017

PHOTO NO. 63

I-195

26'-1" ↓

MINIMUM VERTICAL
CLEARANCE SIGN
OVER GANO STREET

SOUTH FASCIA IN SPAN #1,
LOOKING NORTHWEST

BRIDGE NO. 020001

07/24/2017

PHOTO NO. 64

MINIMUM VERTICAL
CLEARANCE SIGN
OVER WATER STREET

I-195

27'-2" ↓

SOUTH FASCIA IN SPAN #14,
LOOKING NORTH

BRIDGE NO. 020001

07/13/2017