

Photo # 1

Br. 200 is hidden by Br. 700 in foreground



Bridge #020001 North Elevation, Looking South

7/28/2015

Photo # 2

Span 9

Span 10

Bridge #020001 South Elevation, Looking Northwest

7/28/2015



Photo # 3

Girder 'J'

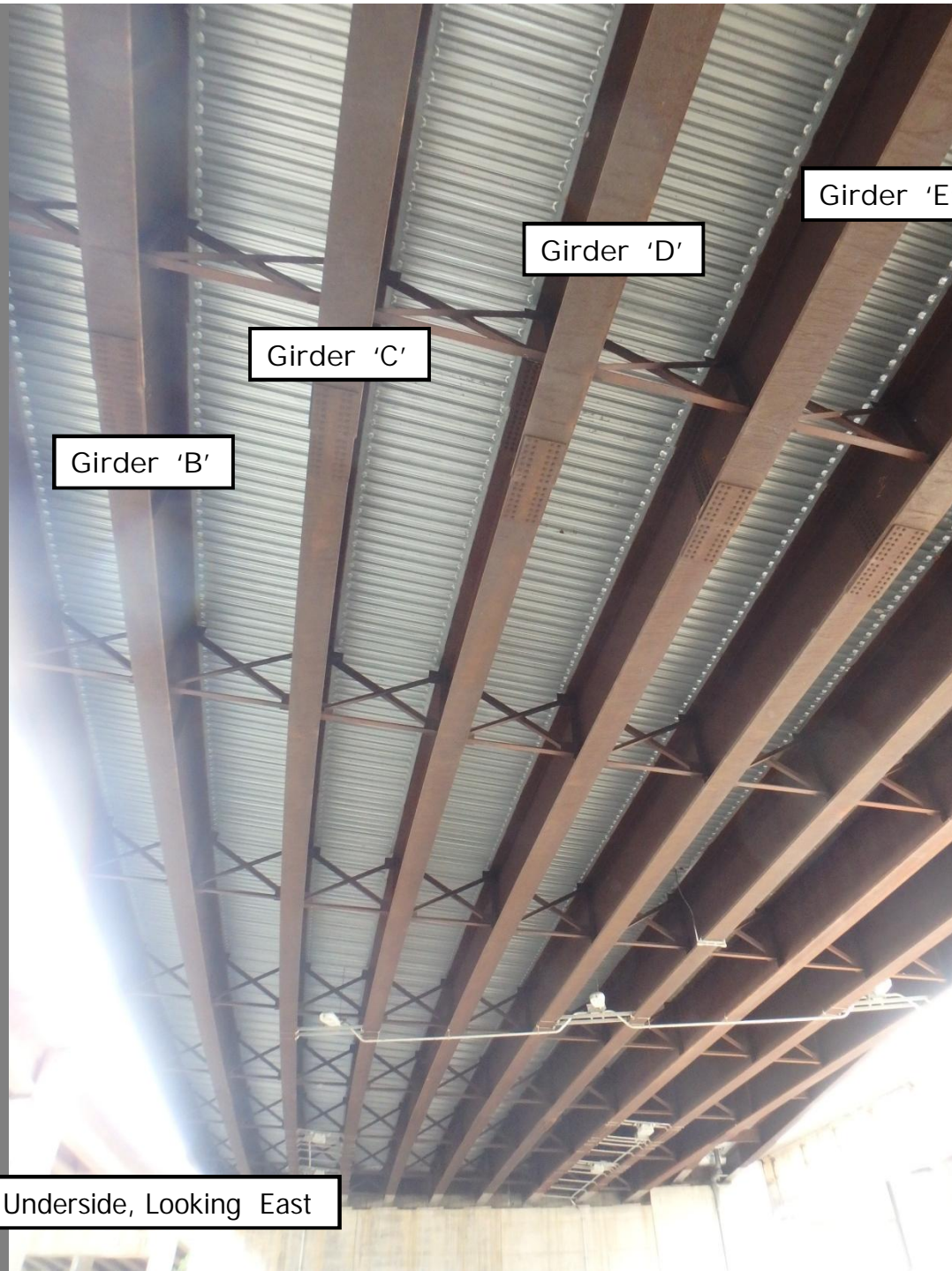
Girder 'A'

Bridge #020001 Typical Underside (Span 12 Shown),
Looking West

7/28/2015



Photo # 4



Bridge #020001 Span 14 Underside, Looking East

7/28/2015

Photo # 5

Approach railing has scattered vertical hairline cracks and isolated scrapes

Scrape marks and minor gouges on concrete railing from impact

Neoprene seal depressed downward locally in a few locations

Sealed and unsealed longitudinal cracks in low-speed lane at approach

Approach slab joint in good condition

Bridge #020001 Roadway Joint at West Abutment, Looking North

7/28/2015

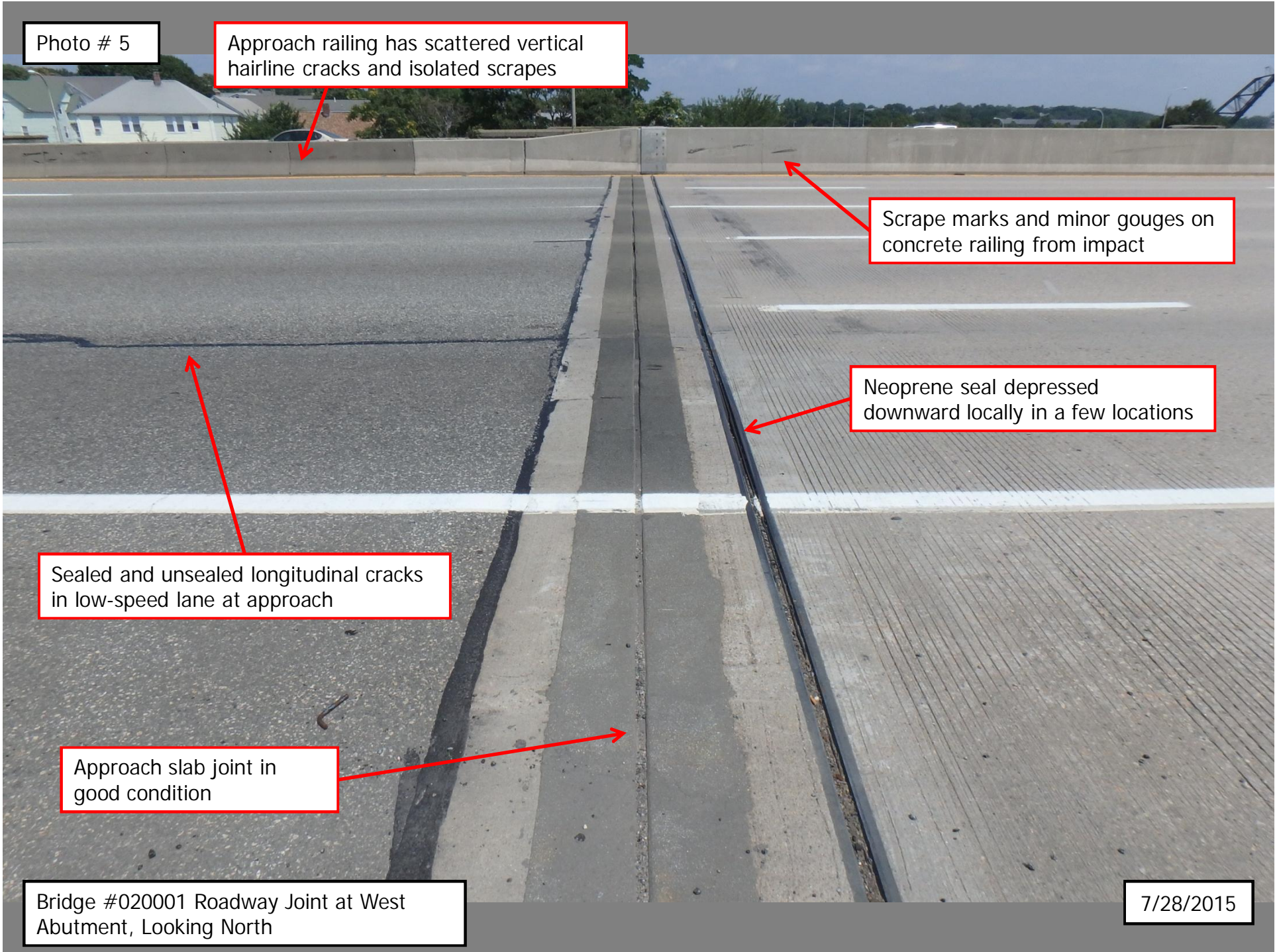


Photo # 6

Wearing surface exhibits moderate wear, minor chips and isolated scrape marks



Bridge #020001 Wearing Surface, Looking Northeast

7/28/2015

Photo # 7



0.020" wide transverse cracks spaced at 3' +/-

Moderate wear of deck

Bridge #020001 Wearing Surface in Span 1, Looking North

7/28/2015

Photo # 8

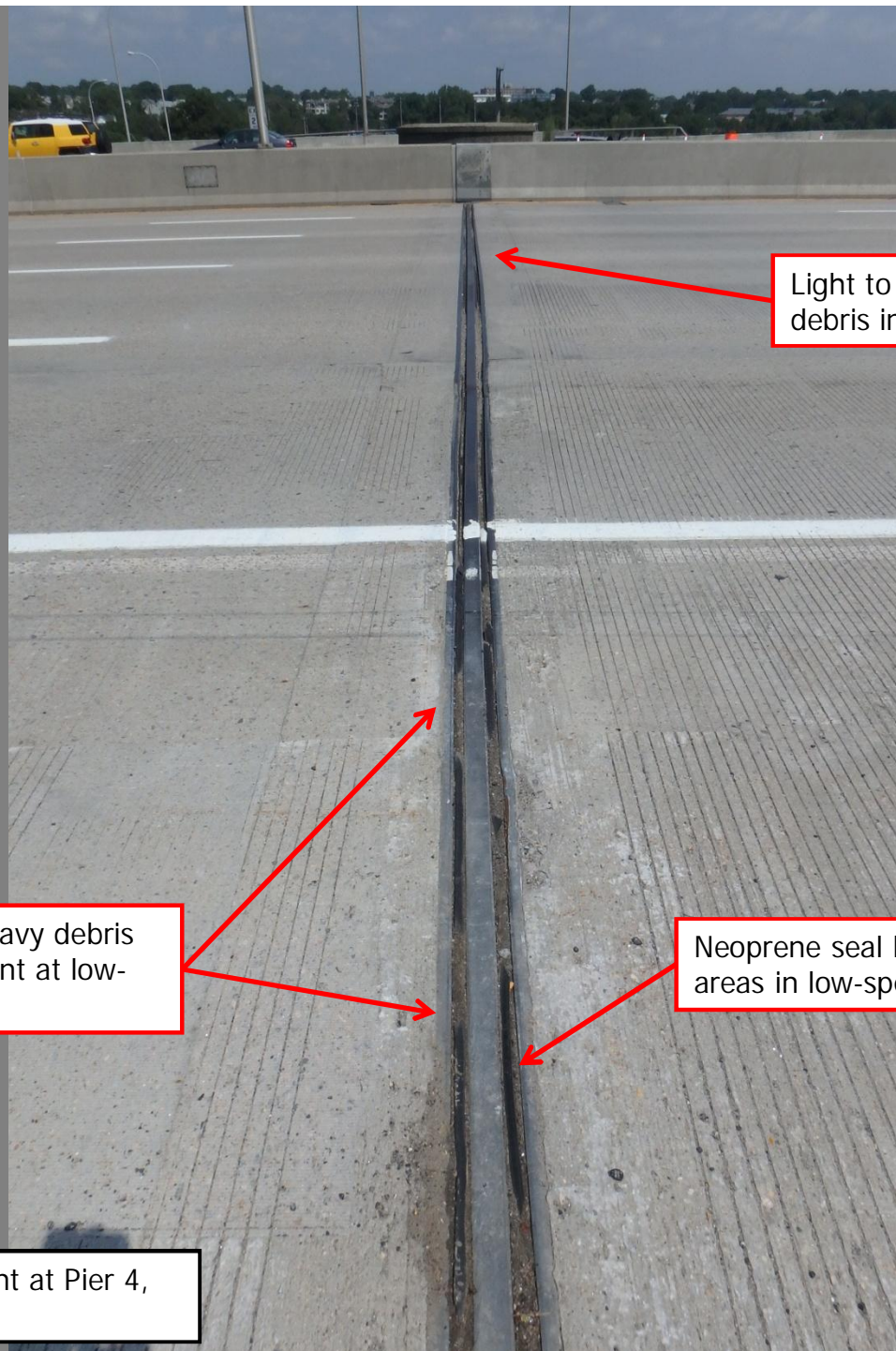
Vertical cracks, from
hairline up to 0.030" wide



Bridge #020001 South Railing in Span 3,
Looking South

7/28/2015

Photo # 9



Light to moderate dirt and debris in joint along travel lanes

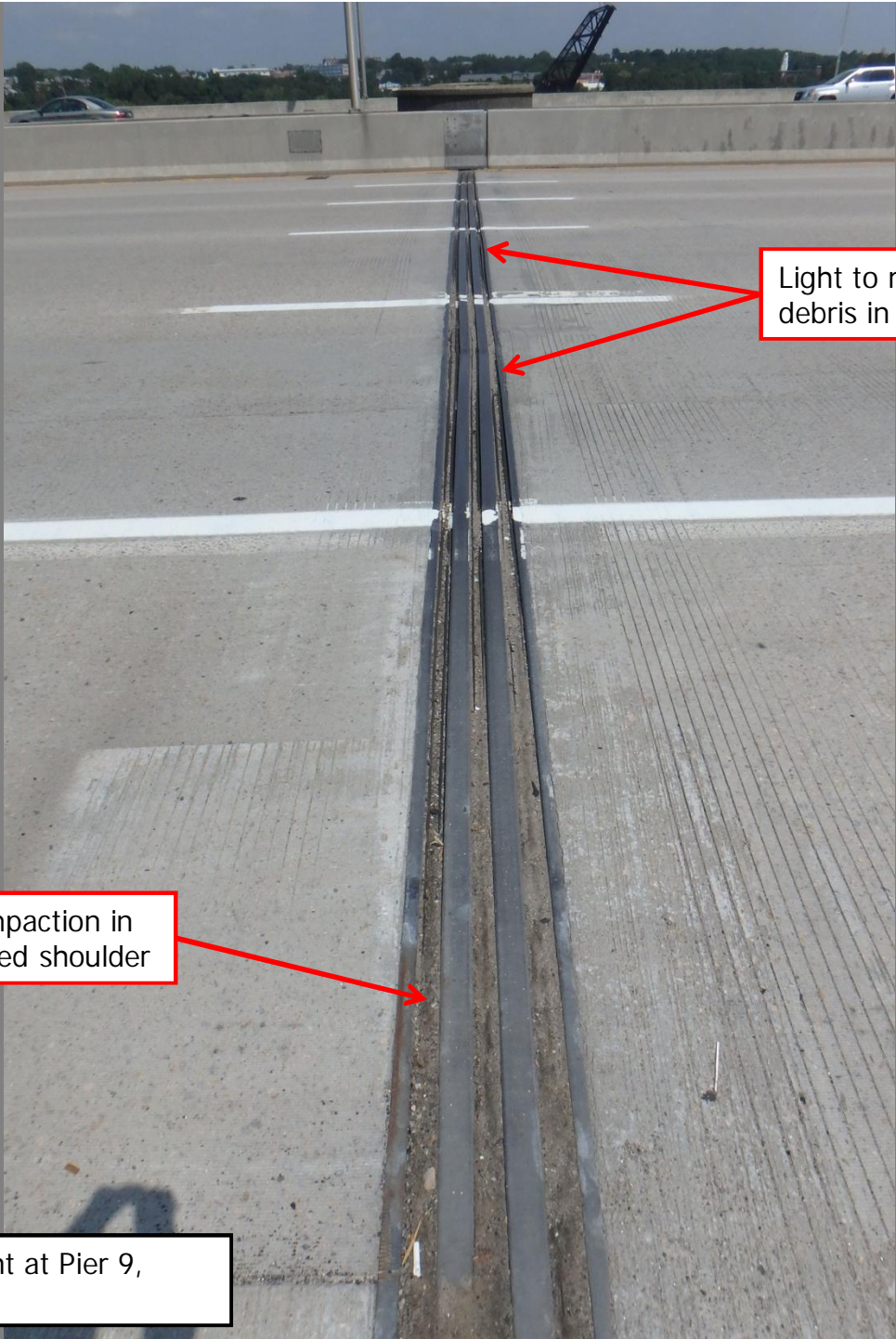
Moderate to heavy debris impactation in joint at low-speed shoulder

Neoprene seal bulging in a few areas in low-speed lane

Bridge #020001 Roadway Joint at Pier 4, Looking North

7/28/2015

Photo # 10



Light to moderate dirt and debris in joint along travel lanes

Heavy debris impaction in joint at low-speed shoulder

Bridge #020001 Roadway Joint at Pier 9, Looking North

7/28/2015

Photo # 11

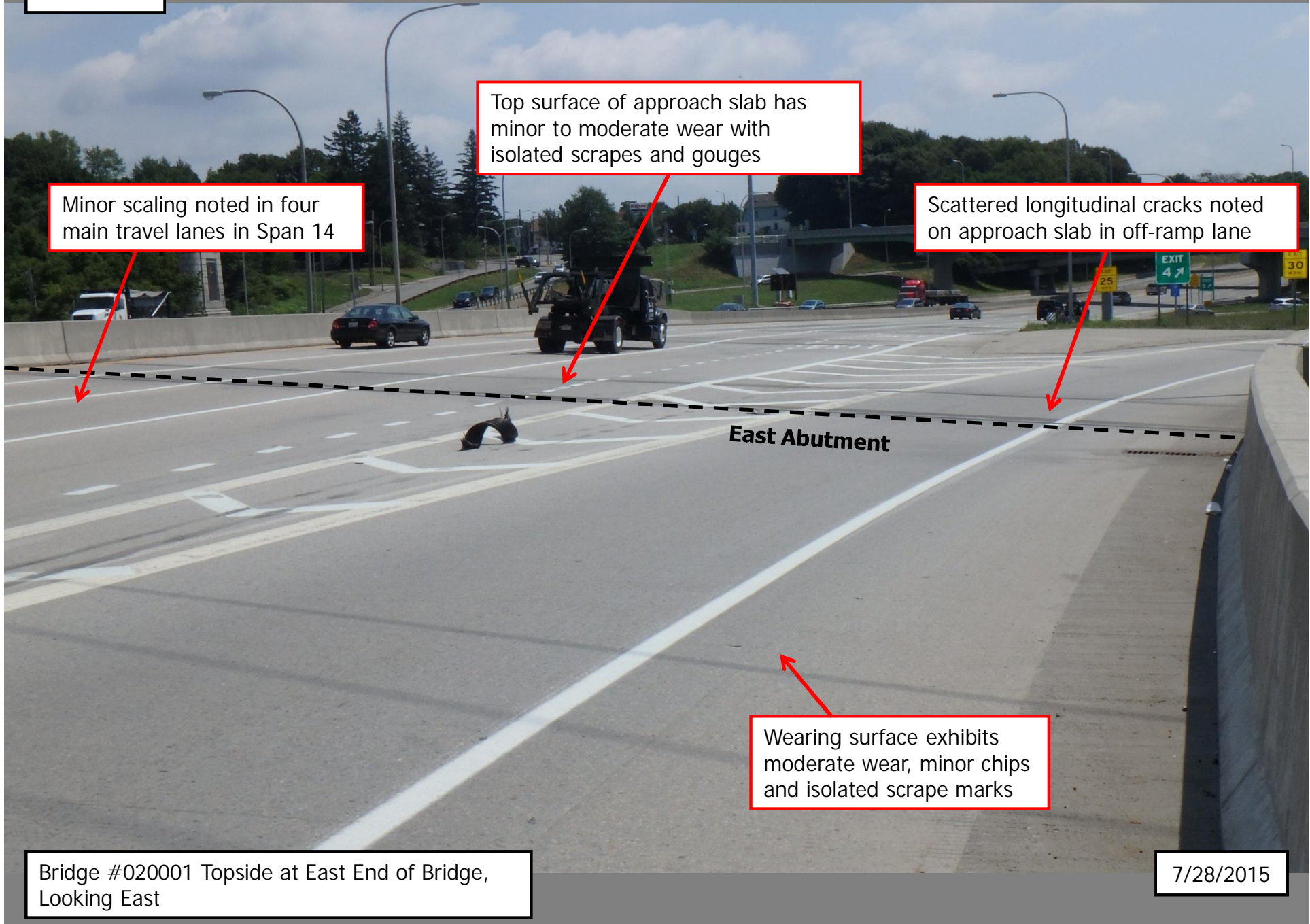


Scupper is completely clogged with dirt and vegetation

Bridge #020001 Scupper along South Railing at Pier 11, Looking East

7/28/2015

Photo # 12



Minor scaling noted in four main travel lanes in Span 14

Top surface of approach slab has minor to moderate wear with isolated scrapes and gouges

Scattered longitudinal cracks noted on approach slab in off-ramp lane

East Abutment

Wearing surface exhibits moderate wear, minor chips and isolated scrape marks

Bridge #020001 Topside at East End of Bridge, Looking East

7/28/2015

Photo # 13

Scattered rust staining from girders

Random areas of hairline map-cracking at top of abutment stem

20' long horizontal hairline crack with efflorescence and moisture staining

Scattered vertical and diagonal hairline cracks, most of which have been ground out and sealed

Bridge #020001 West Abutment, Looking West

7/28/2015

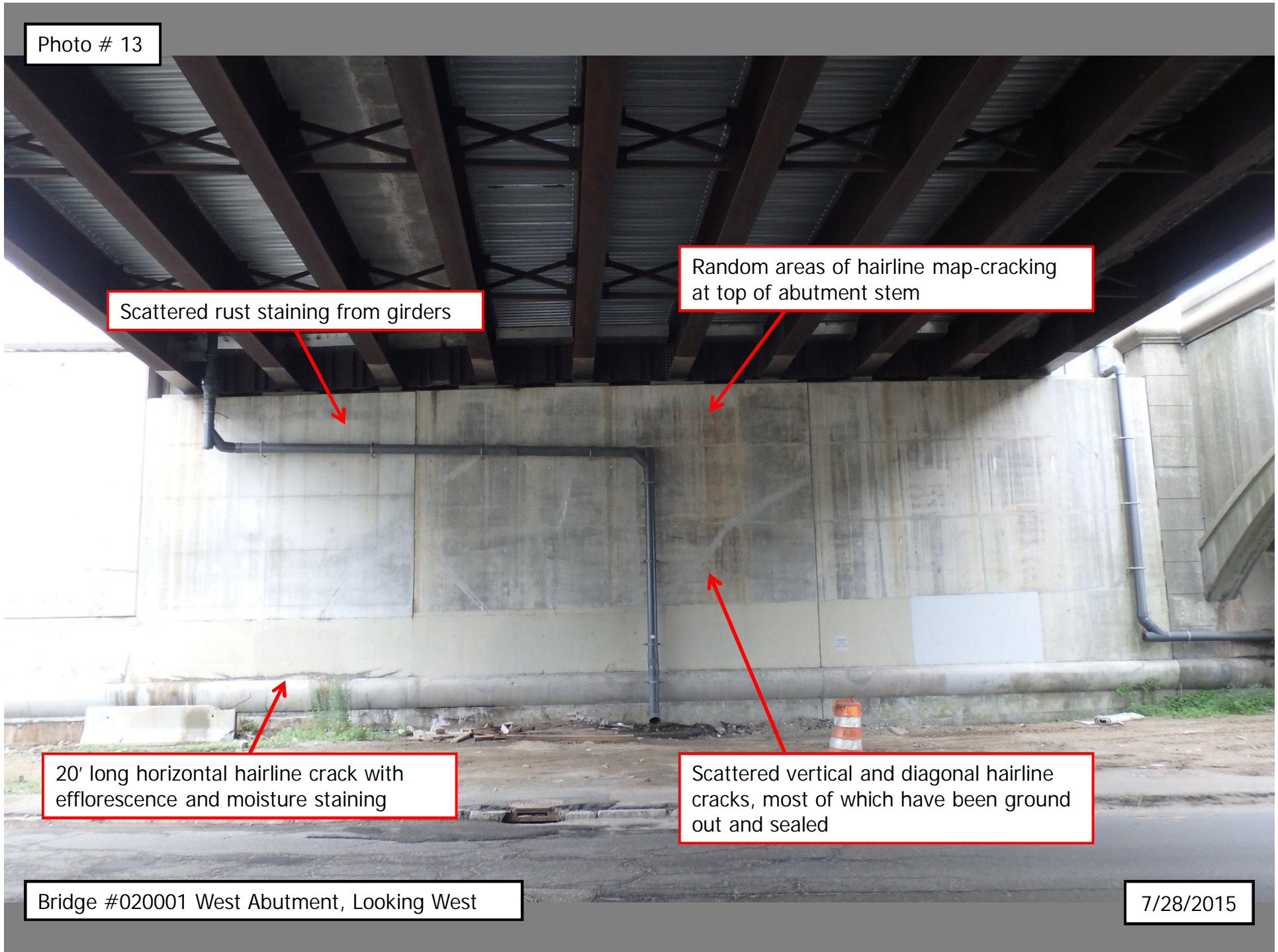


Photo # 14

Scattered areas of minor discoloration on girders (typical)

Impact damage to bottom flange; deflected upward $\frac{3}{4}$ "

Minor impact damage to Girder 'J' bottom flange; deflected upward slightly

Bridge #020001 Span 2, Girder 'I' North Face @ 2nd
Interior Cross-frame from Pier 2, Looking East

7/28/2015

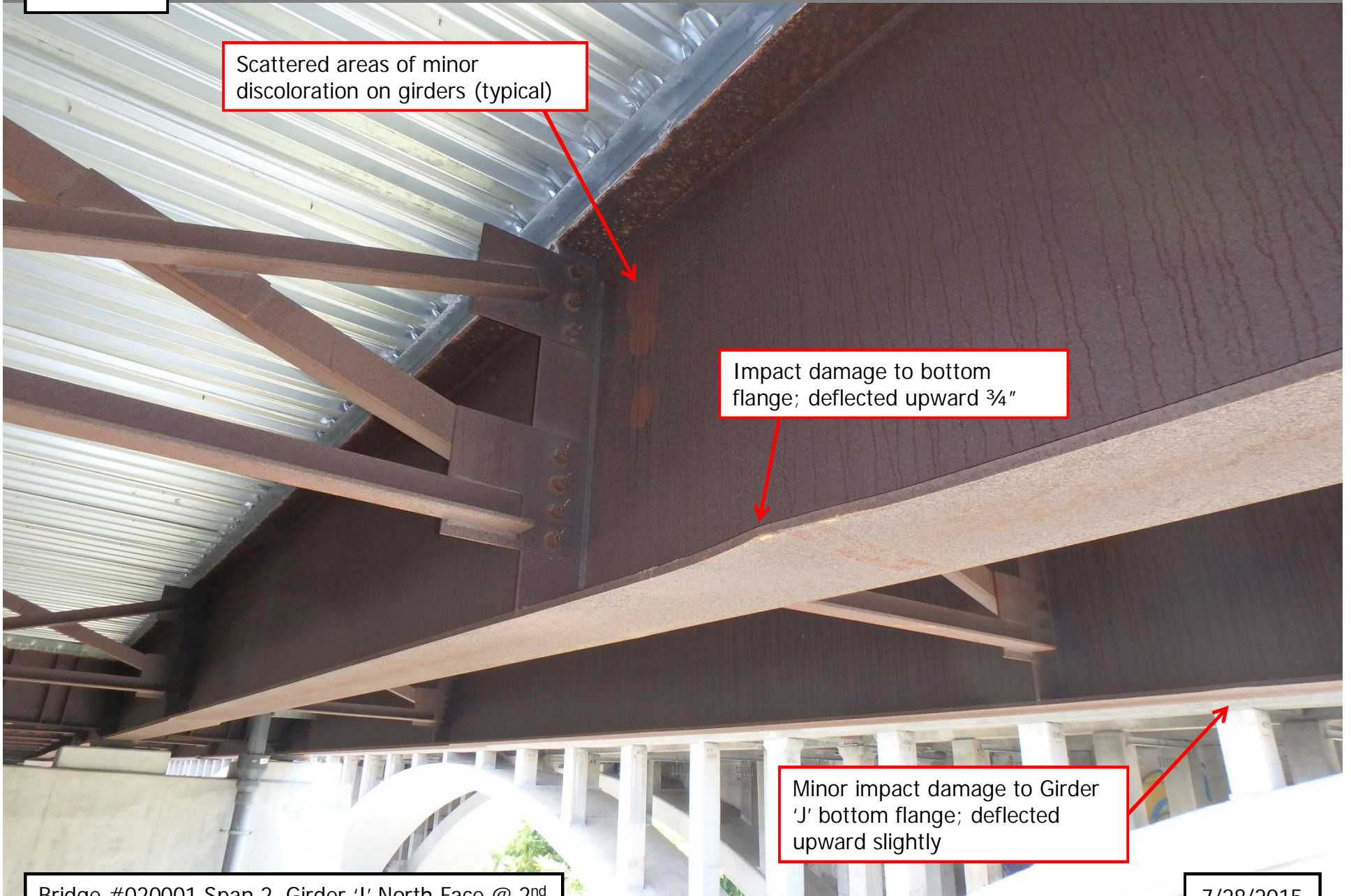


Photo # 15

Girder 'H'

Signs of leakage from anchor
bolt hole in deck underside

Girder 'G'

4' length of moderate
laminar rust to bottom
flange and bottom 3" of
web

Bridge #020001 Span 3, Girder 'H' Between 1st and 2nd
Interior Cross-frames from Pier 3, Looking West

7/28/2015

Photo # 16



Scattered areas of oxidation and rust on stay-in-place forms at interface between adjacent form sections

Girder 'I'

Girder 'J'

Bridge #020001 Span 3, Bay 'I' Between 2nd and 3rd
Interior Cross-frame from Pier 3, Looking East

7/28/2015

Photo # 17

Girder 'E'

Girder 'F'

6' long x 0.010" wide crack on vertical face below Girder 'E', continuing across full width of cap underside

6' high x 0.005" wide crack on vertical face below Girder 'F', continuing 12" onto cap underside

Bridge #020001 West Face of Pier 3 Cap Below Girders 'E' and 'F', Looking Southeast

7/28/2015

Photo # 18

Scattered areas of moderate surface rust on bearing plates (similar at Girder 'G' bearing at this pier)

1/4" gap +/- between masonry plate and concrete pedestal along edges of plate

Bridge #020001 Span 3, Girder 'E' Bearing
@ Pier 3, Looking Southeast

7/28/2015

Photo # 19

A few scattered rust stains and areas of light to moderate surface rust on bearing components

Northwest anchor bolt is backed-off and loose

Northeast anchor bolt is detached

Bridge #020001 Span 4, Girder 'G' Bearing @ Pier 3, Looking Southwest

7/28/2015

Photo # 20

Girders exhibit scattered areas of spotty orange surface rust and/or discoloration (typical)

Bottom flange bolt head is not flush with splice plate

Bridge #020001 Span 4, Girder 'F' Bolted Field Splice Near Pier 3, Looking North

7/28/2015

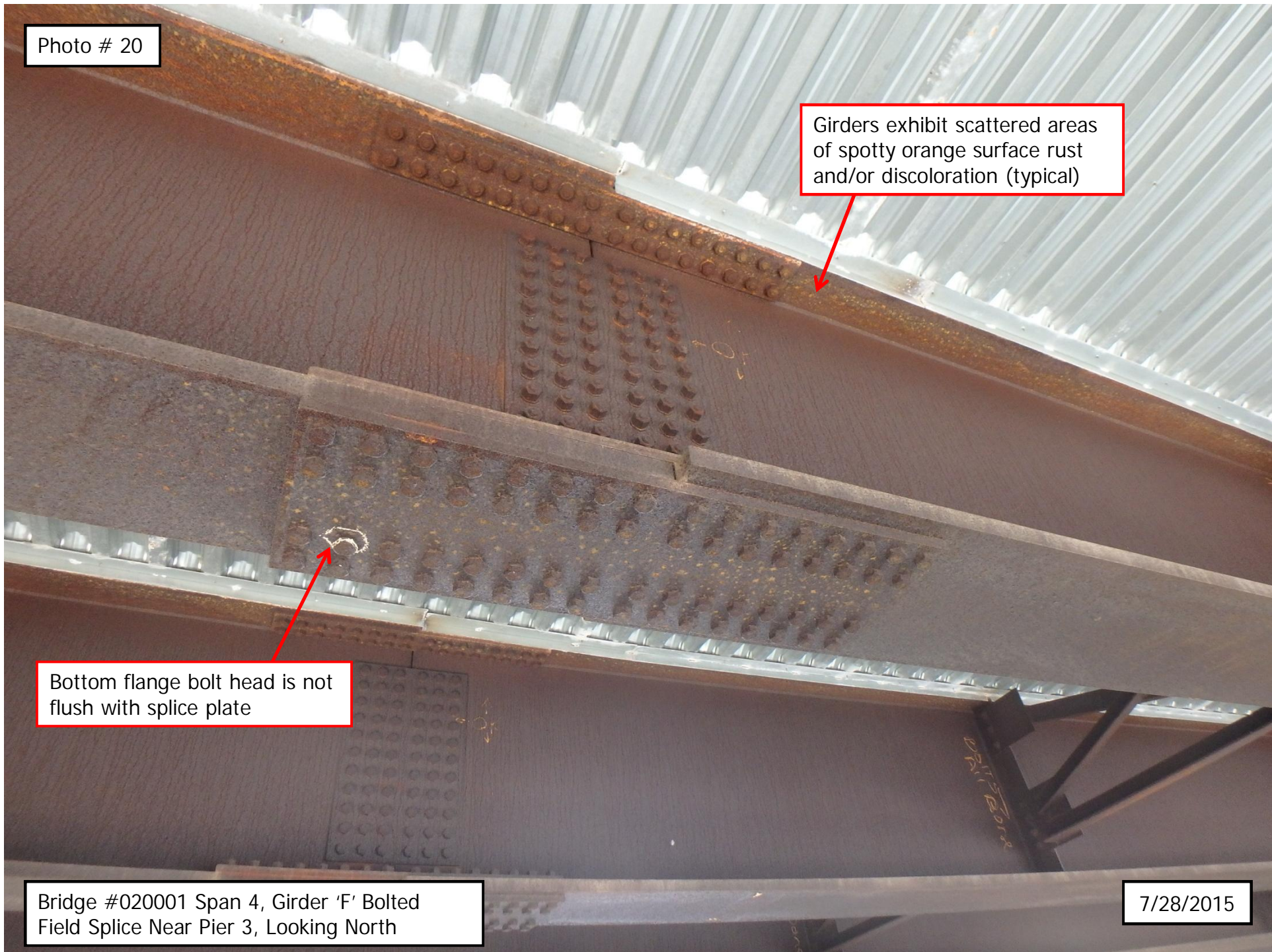


Photo # 21

Span 4

Span 5

Painted girder ends exhibit isolated locations of chipped paint

Bearing masonry plate exhibits moderate surface rust

Bridge #020001 Spans 4 & 5, Girder 'J' Ends @ Pier 4, Looking North

7/28/2015

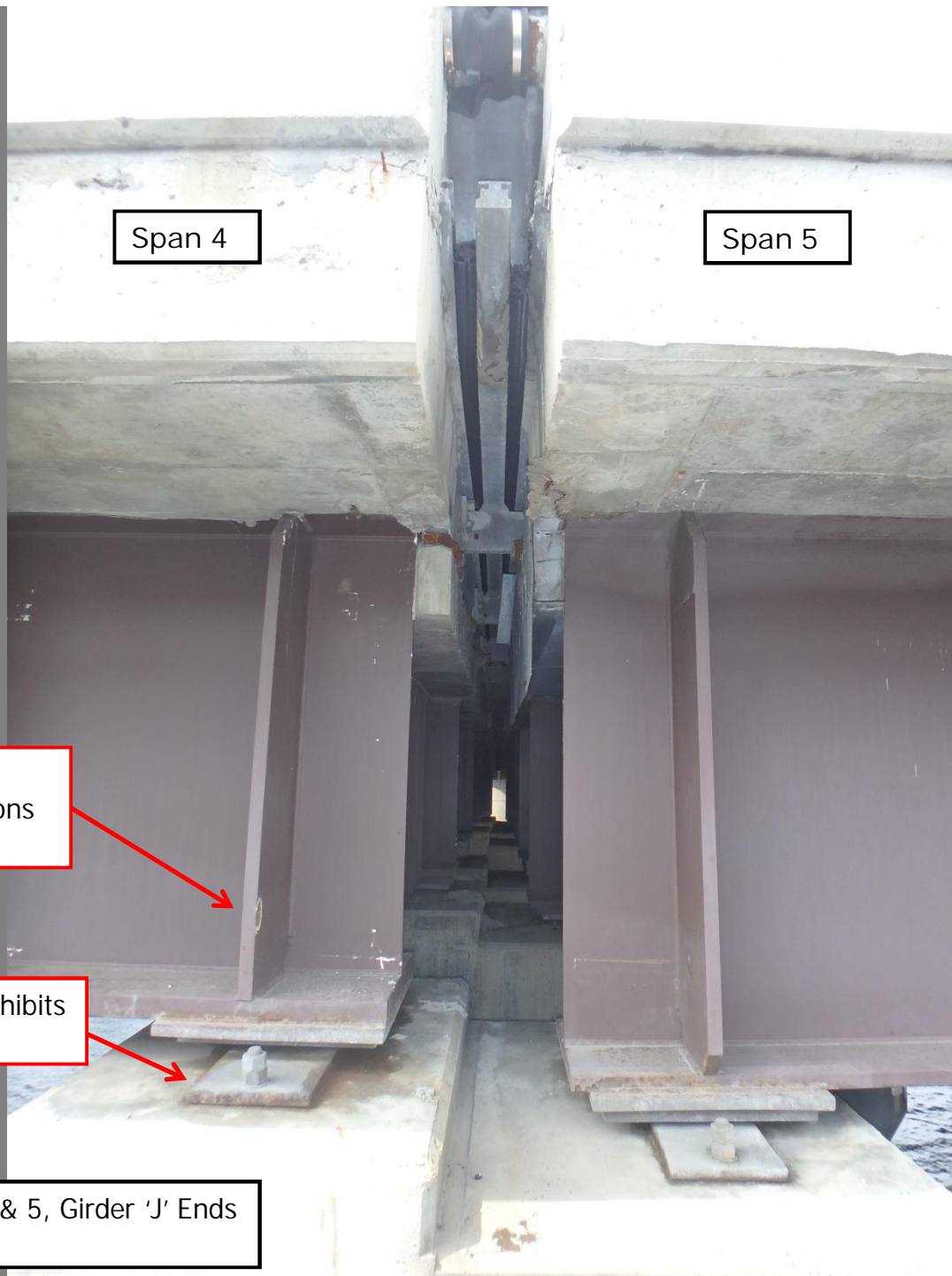


Photo # 22

Girder CL


Centerline of girder is positioned approx. 1" south of centerline of bearing pad (similar at other interior girder bearings at this pier)

Bearing Pad CL

Bridge #020001 Span 5, Girder 'E' Bearing @ Pier 4, Looking West

7/28/2015

Photo # 23

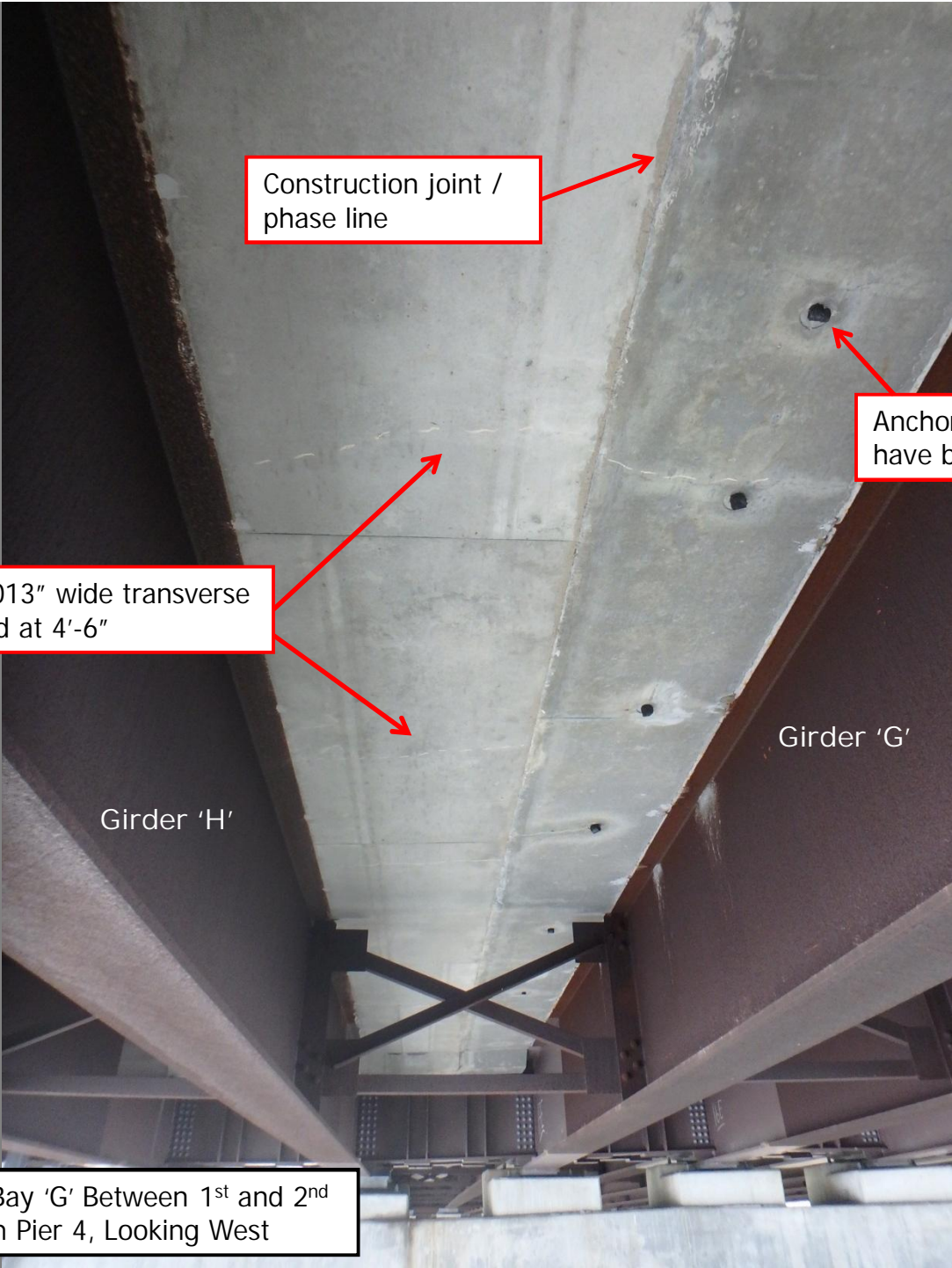


Bottom flange exhibits 6" wide areas of minor flaking along north edge

Bridge #020001 Span 5, Girder 'A' Near Pier 5,
Looking Northeast

7/28/2015

Photo # 24



Construction joint /
phase line

Anchor bolt holes
have been filled

Hairline to 0.013" wide transverse
cracks, spaced at 4'-6"

Girder 'H'

Girder 'G'

Bridge #020001 Span 5, Bay 'G' Between 1st and 2nd
Interior Cross-Frame From Pier 4, Looking West

7/28/2015

Photo # 25

Column 3

Column 1

Pier walls typically exhibit scattered vertical hairline cracks

Scattered areas of missing mortar between masonry veneer stones (typ.)

Bridge #020001 East Face of Pier 5, Looking West

7/28/2015

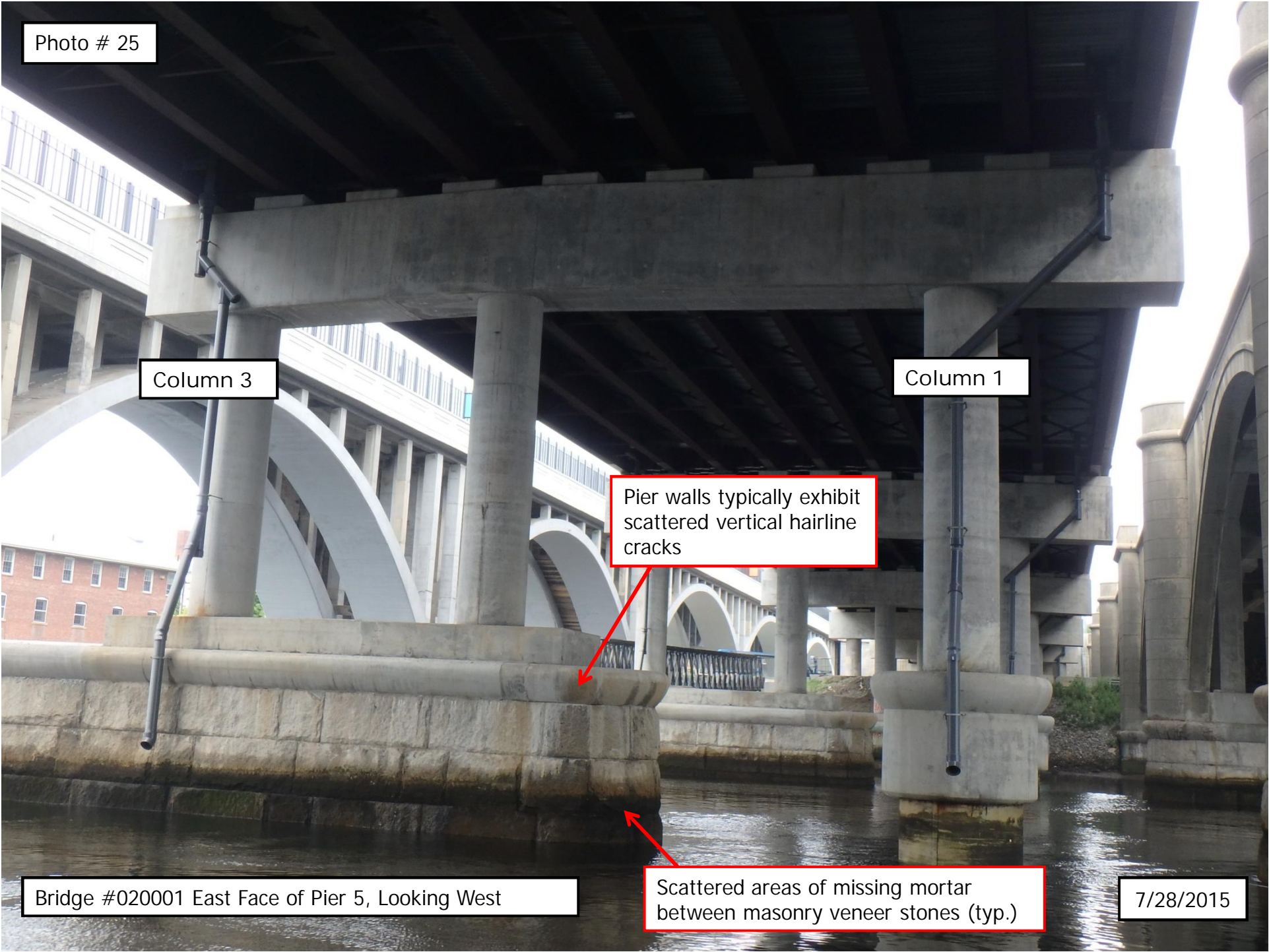


Photo # 26

Up to 1/16" gap between sole plate and girder bottom flange along north 1/2 of flange

Minor surface rust on bearing plate

Bridge #020001 Span 6, Girder 'H' Bearing @ Pier 5, Looking West

7/28/2015

Photo # 27

Scattered areas of discoloration on end diaphragm (typical)

Scattered areas of concrete debris on end diaphragms, girders, and bearings from over-pour during construction

Bridge #020001 Span 6, Bay 'A' @ Pier 6,
Looking East

7/28/2015

Photo # 28

Rust staining from girder

Masonry plate not flush with top of concrete pedestal; up to $\frac{3}{4}$ " gap along edges of masonry plate

Bridge #020001 Span 6, Girder 'E' Bearing
@ Pier 6, Looking Southeast

7/28/2015



Photo # 29

Bottom flange splice has three missing bolts

Bridge #020001 Span 7, Girder 'G' Bolted Field Splice Near Pier 6 (West Splice), Looking North

7/28/2015

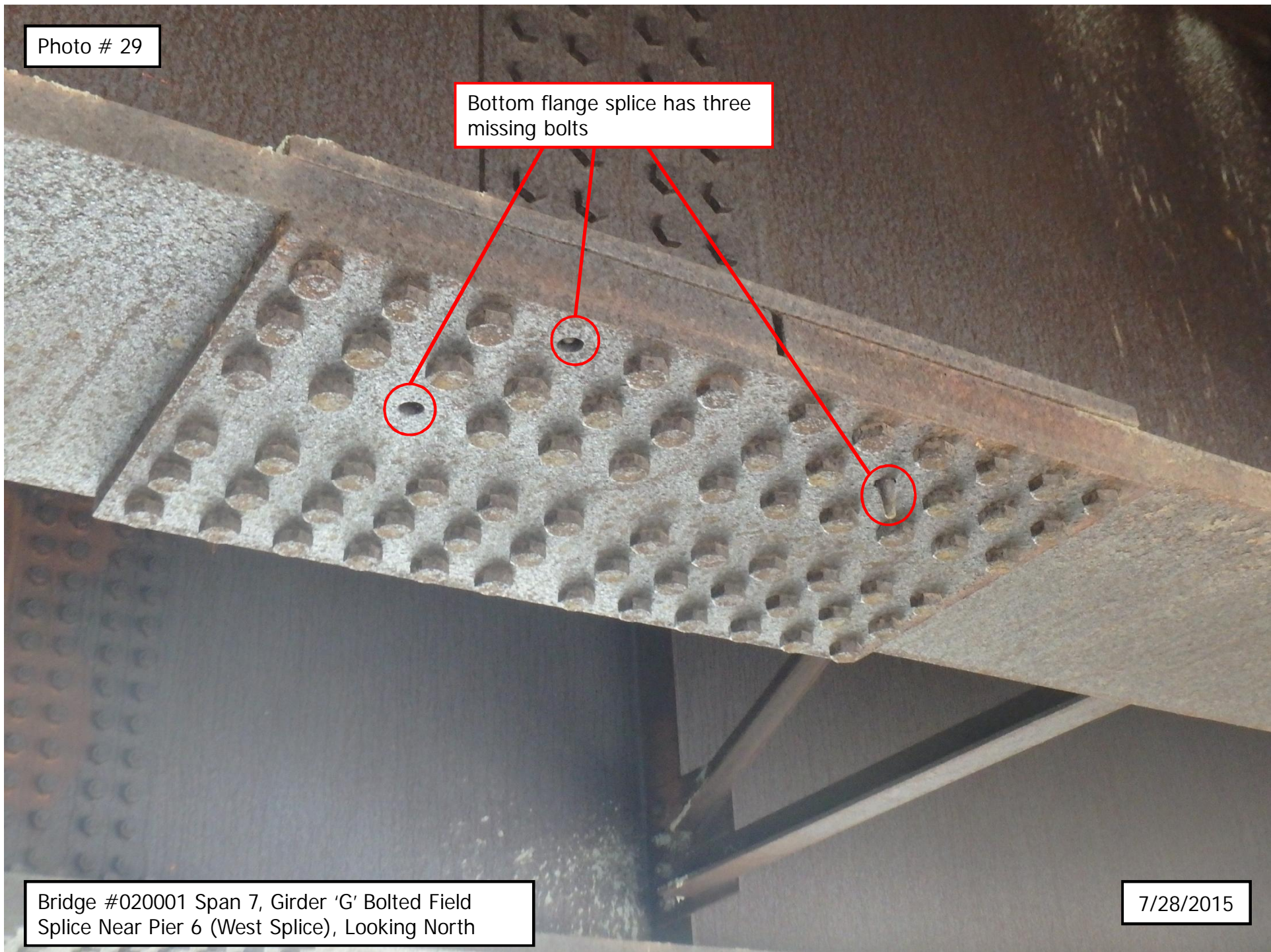


Photo # 30

Column 1

Scattered areas of
minor graffiti on
Columns 2 and 3

Bridge #020001 West Face of Pier 7, Looking East

Timber fender system

7/28/2015

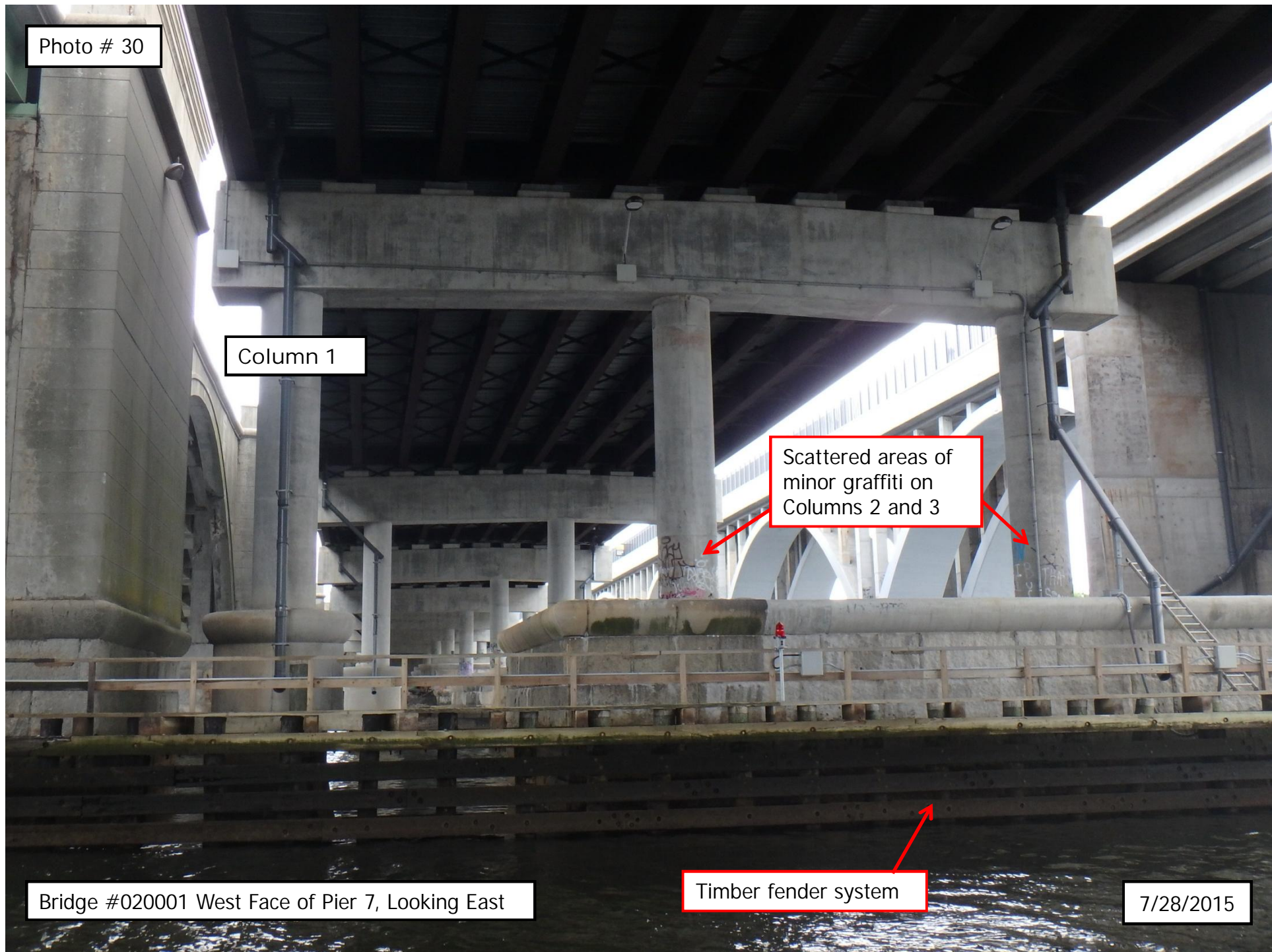
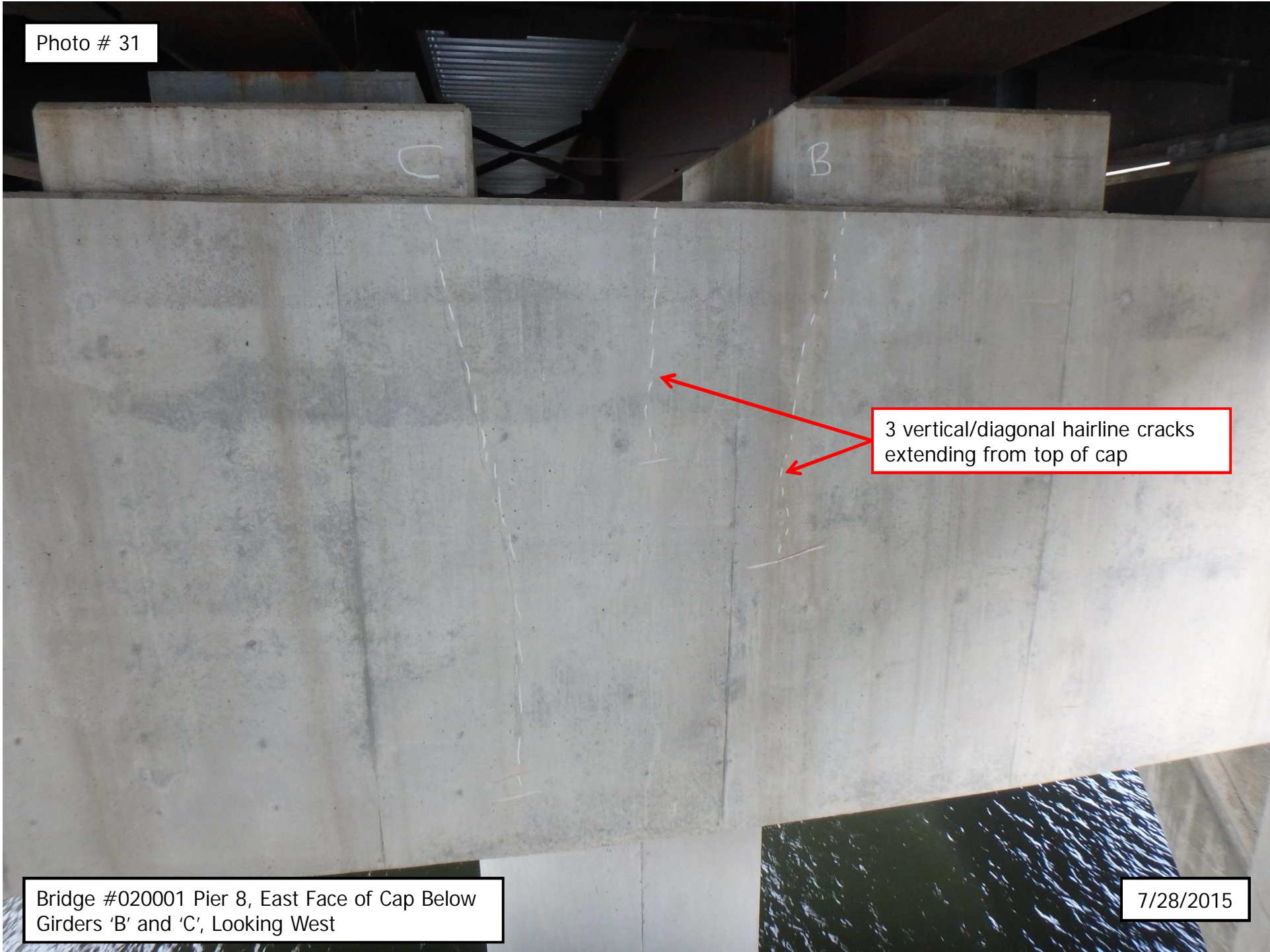


Photo # 31



3 vertical/diagonal hairline cracks extending from top of cap

Bridge #020001 Pier 8, East Face of Cap Below Girders 'B' and 'C', Looking West

7/28/2015

Photo # 32

Girder CL

North anchor bolts are backed off

Centerline of girder is positioned approx. 1.5" south of centerline of bearing pad (similar at Girder 'H' bearing at this pier)

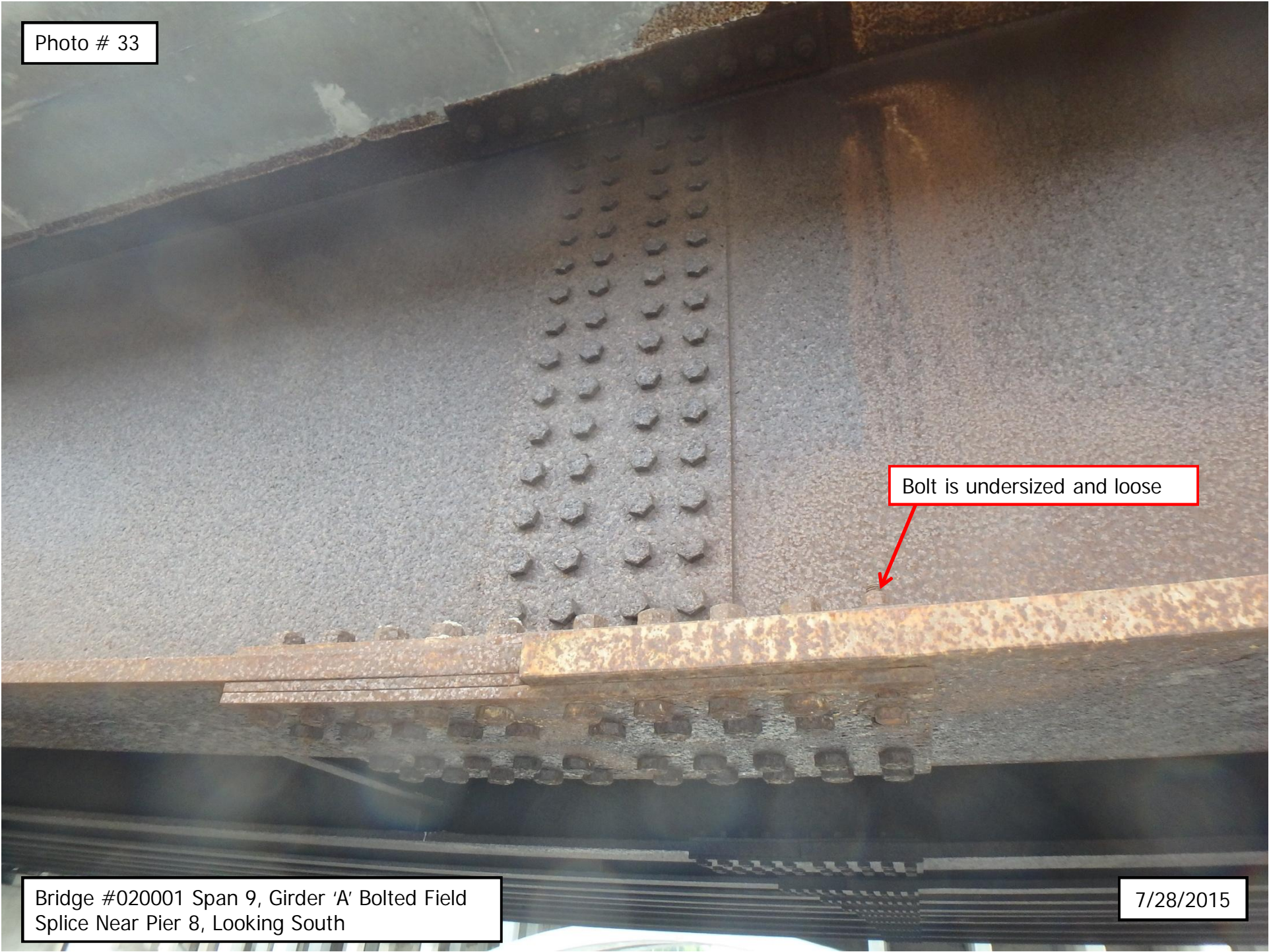
Bearing Pad CL

Rust stains on bearing plates from girder

Bridge #020001 Span 9, Girder 'G' Bearing @ Pier 8, Looking West

7/28/2015

Photo # 33



Bolt is undersized and loose

Bridge #020001 Span 9, Girder 'A' Bolted Field Splice Near Pier 8, Looking South

7/28/2015

Photo # 34

Washer plate at top cross-frame connection is bearing on adjacent washer plate and is slightly bent

Girder 'H'

Bridge #020001 Span 9, Bay 'G' – 1st Interior Cross-frame from Pier 9, Looking East

7/28/2015

Photo # 35

Electrical conduit sheath at joint is torn and detached

Span 9

Span 10

Bridge #020001 Spans 9 & 10, Exterior Face of South Railing at Pier 9 Joint, Looking North

7/28/2015

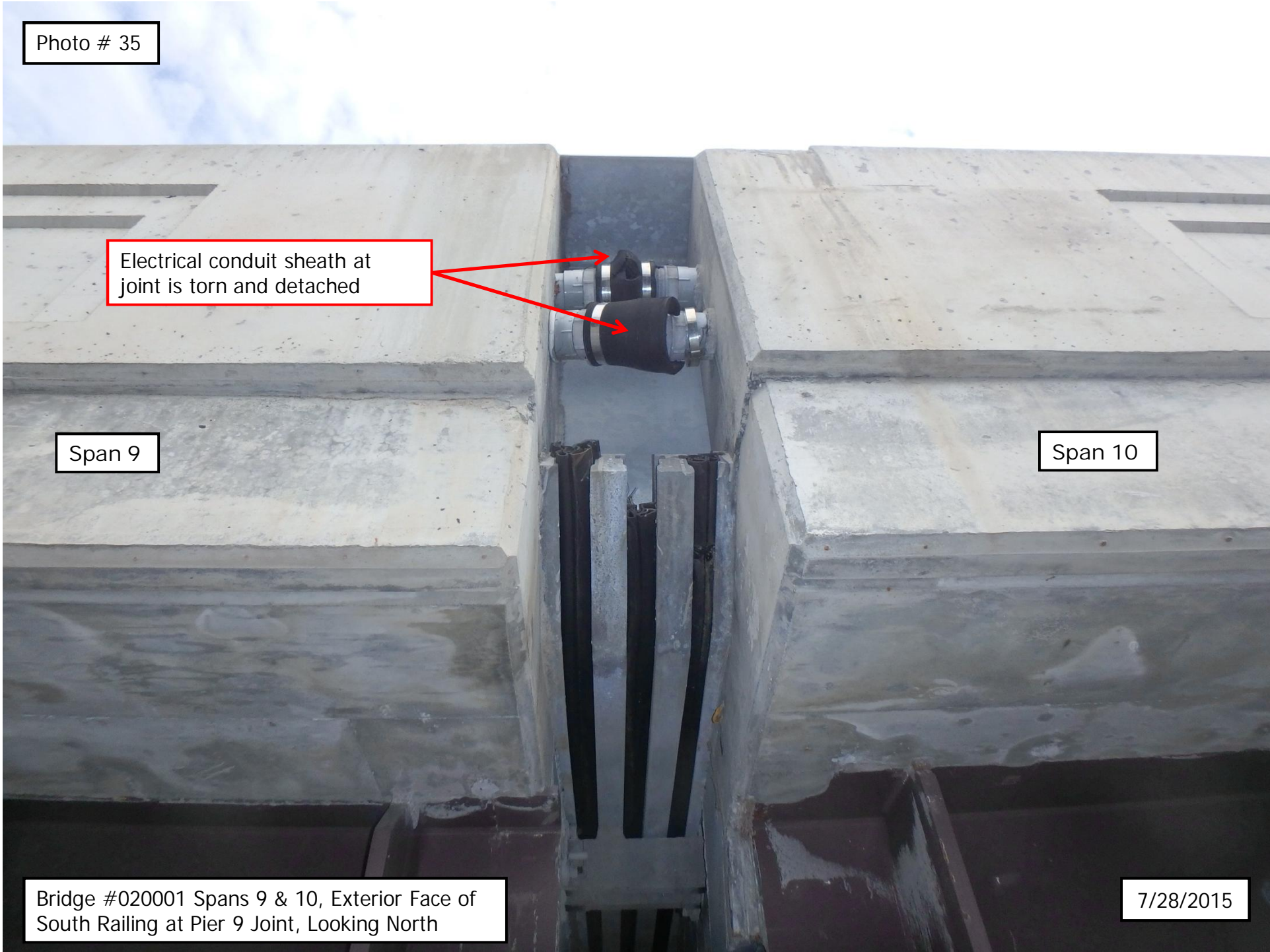


Photo # 36

Backside of bearing stiffener
not painted

Connection bolts are not fully
engaged; gap between diaphragm
and bearing stiffener

Bridge #020001 Span 10, Girder 'H' @ Pier 9,
Looking East

7/28/2015

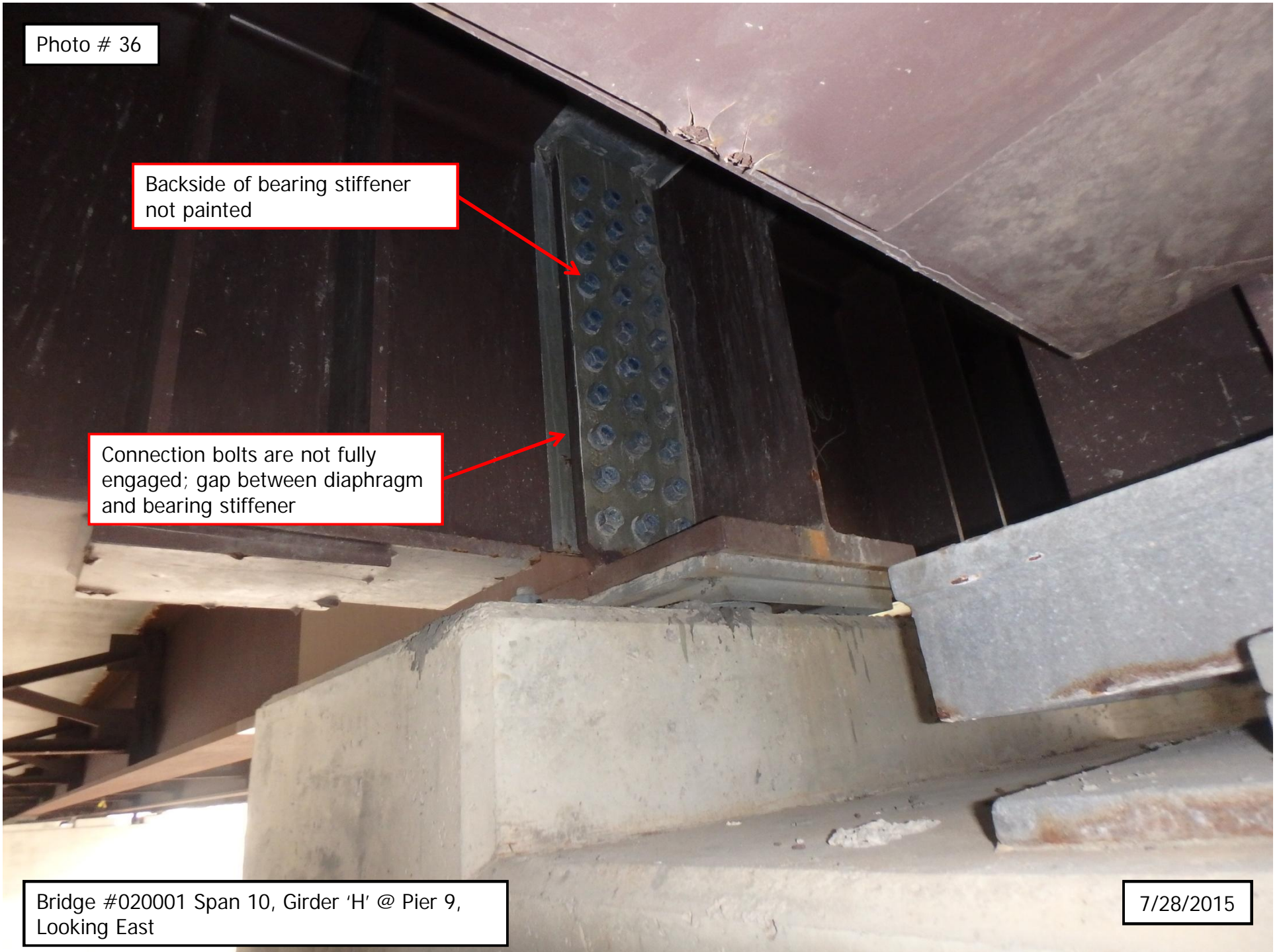


Photo # 37



North anchor bolt is backed-off

Up to 5/8" gap between masonry plate and top of concrete pedestal along edges of plate

Bridge #020001 Span 10, Girder 'H' Bearing @ Pier 10, Looking Southeast

7/28/2015

Photo # 38

Active leakage observed along interface of girder top flange and stay-in-place forms

Rusting of stay-in-place forms

Minor corrosion with lamellar rust on both flanges and web along 4' length

Bridge #020001 Span 11, Girder 'A' Between 1st and 2nd Interior Cross-frames from Pier 10, Looking Northwest

7/28/2015

Photo # 39



Concrete pier walls typically exhibit scattered vertical hairline cracks

Previously noted area of heavy scaling has been repaired with concrete patch

Areas of graffiti throughout pier wall and scattered areas of graffiti on columns

Bridge #020001 Pier 11 West Face, Looking East

7/28/2015

Photo # 40

Scupper pipe elbow does not extend far enough into lower pipe; water is splashing out onto pier face

Bridge #020001 Span 12, Bay 'A' @ Pier 11,
Looking North

7/28/2015

Photo # 41

Rust stains on bearing plates

Anchor bolts backed off /
not fully seated

Up to $\frac{3}{4}$ " gap between
masonry plate and pedestal;
anchor bolts are backed off

Bridge #020001 Span 12, Girder 'H' Bearing
@ Pier 11, Looking West

7/28/2015

Photo # 42



Full height x 1/16" wide vertical crack in pier wall

Previous spall has been repaired with concrete patch

Bridge #020001 Pier 12 East Face, Looking West

7/28/2015

Photo # 43

Construction joint /
phase line

Transverse hairline crack

Girder 'G'

Areas of scaling up to
36" x 20"

Anchor bolt holes
are not filled

Girder 'H'

Bridge #020001 Span 13, Bay 'G' @ 1st Interior
Cross-frame from Pier 12, Looking East

7/28/2015

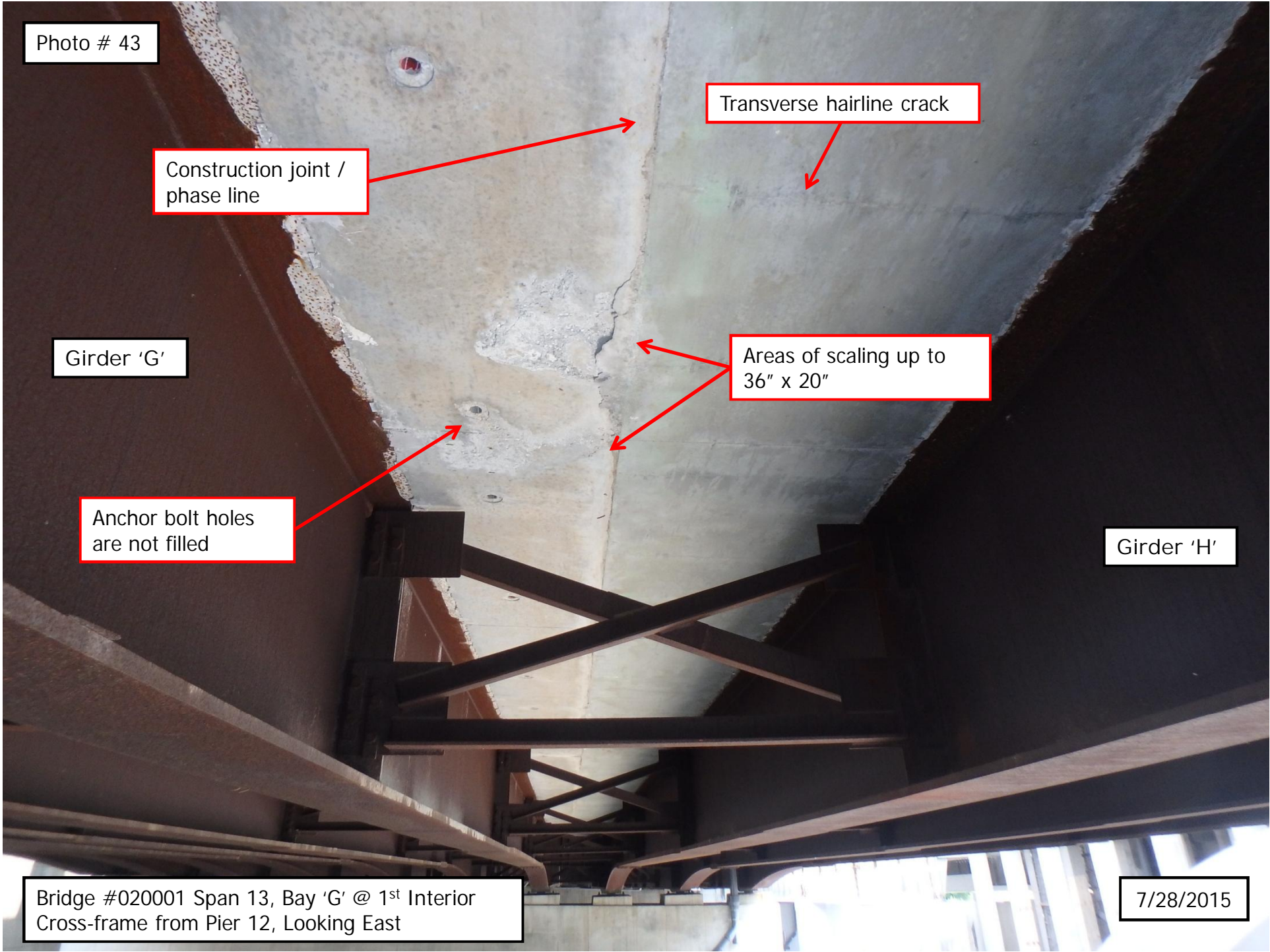


Photo # 44

Span 13

Span 14

Up to 5/8" gap between
masonry plate and top face of
concrete pedestal

Bridge #020001 Spans 13 & 14, Girder 'J' @
Pier 13, Looking North

7/28/2015

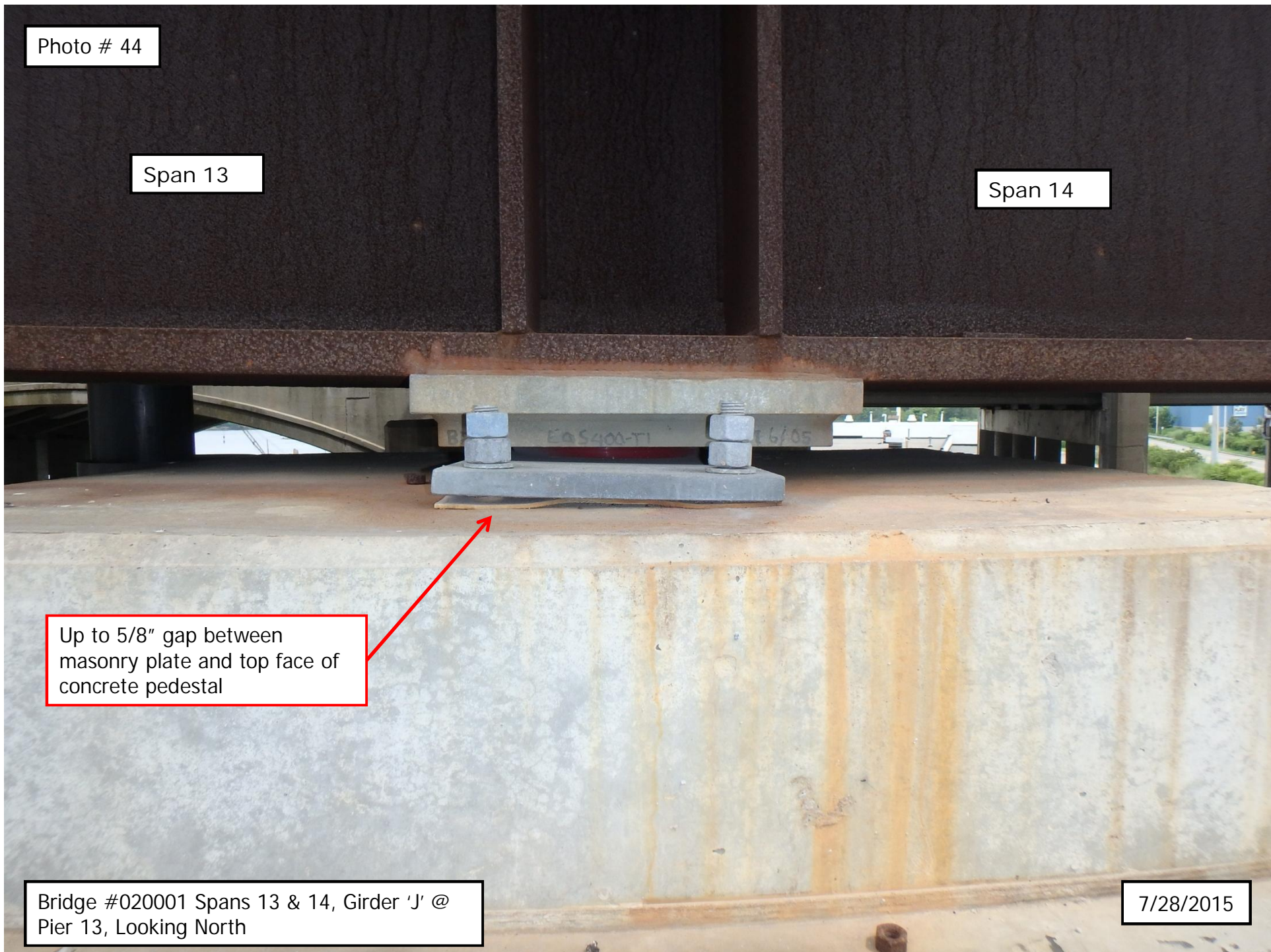


Photo # 45

Rust stains on bearing plates from girder

Backed off / loose anchor bolt nuts

Bridge #020001 Span 14, Girder 'I' Bearing @ Pier 13, Looking Southwest

7/28/2015



Photo # 46

9' high x 1' wide hollow area on north end face of abutment with adjacent 3' high x 10" wide x up to 8" deep spall

Scattered rust staining from girders

Random cracks with efflorescence

Light-moderate vegetation growth in front of northeast return wall

Bridge #020001 East Abutment, Looking Southeast

7/28/2015

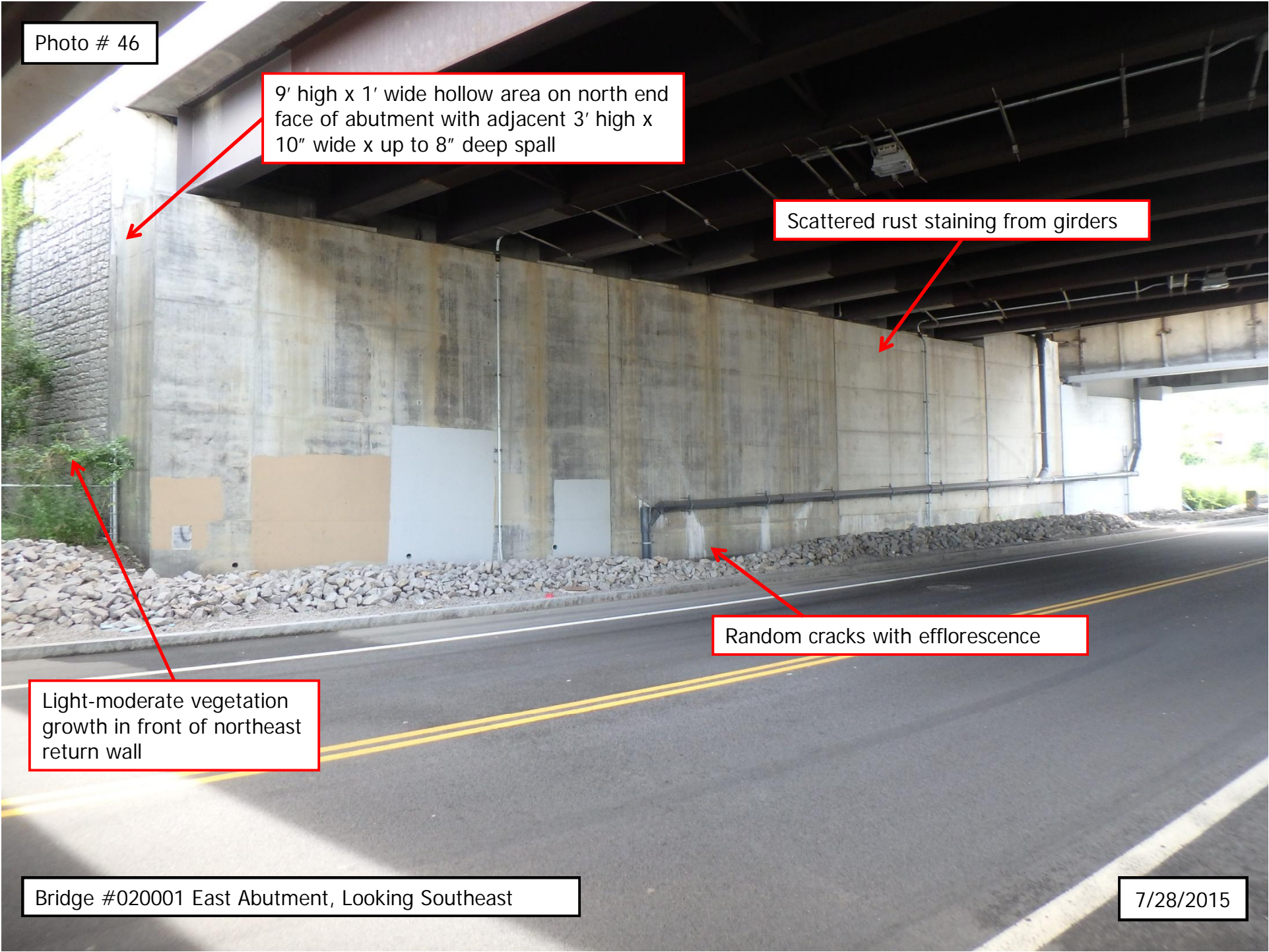


Photo # 47

24" wide x 7" high x up to 12" deep backwall spall behind Girder 'A'

Staining from concrete over-pour

Bridge #020001 Span 14, Girder 'A' @ East Abutment, Looking Southeast

7/28/2015



Photo # 48



Vertical hairline cracks in backwall with light efflorescence

Bridge #020001 Span 14, Bay 'F' @ East Abutment, Looking East

7/28/2015